

कोलकाता पत्तन न्यास
KOLKATA PORT TRUST

प्रशासनिक प्रतिवेदन
ADMINISTRATIVE REPORT
2012-2013



BOARD OF TRUSTEES

As on 31.3.2013

Shri R. P. S. Kahlon, IAS

Chairman
Kolkata Port Trust,
15, Strand Road,
Kolkata - 700 001.

Shri C. M. Bachhawat

Principal Secretary,
Commerce & Industries Department,
Government of West Bengal,
4, Abanindranath Tagore Sarani,
(4, Camac Street)
Kolkata - 700 016.

Shri Manish Jain, IAS

Dy. Chairman (H)
Kolkata Port Trust,
Haldia, Midnapore.

Capt. S. C. Mandal

Principal Officer (I/C) Cum
Joint Director General of Shipping (T)
Mercantile Marine Department,
Marine House,
Hastings, Kolkata - 700 022.

Shri I. Jeyakumar, IRTS

Dy. Chairman (K)
Kolkata Port Trust.

Shri Prabhas Dansana

Chief Freight Transportation Manager,
South Eastern Railway,
Garden Reach Road,
Kolkata - 700 043.

Shri B. Poiyaamozhi

Development Adviser (Ports),
Ministry of Shipping,
Transport Bhawan,
1, Sansad Marg,
New Delhi - 110 001.

Shri P. K. Jena

Chief Freight Transportation Manager,
Eastern Railway,
4, N. S. Road,
Kolkata - 700 001.

Shri Ashutosh Awasthi

Commissioner of Customs (Port),
15/1, Strand Road,
Kolkata - 700 001.

Commodore Ravi Ahluwalia

Naval Officer-in-Charge,
West Bengal,
Navy Office,
Hastings,
Kolkata - 700 022.



BOARD OF TRUSTEES

As on 31.3.2013

Mr. Ragam Kishore

President,
Indian Private Ports and Terminals Association,
CEO and Whole time Director,
Vizag Seaport Private Limited,
Administrative Block,
S-4 Gallery, Port Area,
Visakhapatnam - 530 035.

Shri Asim Sutradhar

General Secretary,
National Union of Waterfront Workmen (I)
23/1, Joy Krishna Paul Road,
Kolkata - 700 023.

Shri Bhaskar Basu,

Pratidin Prakashani Ltd.,
20, Prafulla Sarkar Street,
Kolkata - 700 072.

Shri Sambhu Nath Dutta

17L/1A, Dover Terrace,
Kolkata - 700 019.

Shri Sachi Kumar Koley

President CCHAA,
C/o, Saila Shipping & Clearing Agency (P) Ltd.
4, Fairlie Place, Room No. M10,
Mezzanine Floor,
Kolkata - 700 001.

Shri Ravi Todi

Joint Managing Director,
Magma Fincorp Limited,
Merchants' Chamber of Commerce,
15B, Hemanta Basu Sarani,
Kolkata - 700 001.

DIG, NV Narasimha

Chief of Staff,
Coast Guard Region (North - East),
Synthesis Business Park,
6th Floor, Shrachi Building,
New Town, Rajarhat,
Kolkata - 700 157.

Shri Paresh Acharya

Jt. Secretary
Calcutta Port & Shore Mazdoor Union,
Krishnapada Ghosh Bhawan,
16, Birsa Munda Sarani,
Kolkata - 700 043.

Shri Dibyendu Biswas

Alipore Police Court.

Shri Debashis Dutta,

B. G. Samadder & Sons Pvt. Ltd.
9, Bakery Road, Hastings,
Kolkata - 700 022.

Shri Sandipan Chakravorty

Managing Director,
Tata Steel Processing and
Distribution Limited, Tata Centre,
43, J. L. Nehru Road,
Kolkata - 700 071.



PRINCIPAL OFFICERS

As on 31st March, 2013

Chairman	:	Shri R. P. S. Kahlon, IAS
Dy. Chairman (Haldia)	:	Shri Manish Jain, IAS
Dy. Chairman (Kolkata)	:	Shri I. Jeyakumar, IRTS

KOLKATA DOCK SYSTEM

Secretary	:	Shri A. K. Mukhopadhyay
Financial Adviser & Chief Accts. Officer (I/C)	:	Shri S. Bagchi
Director, Marine Department	:	Capt. A.K. Bagchi
Traffic Manager	:	Shri U. Sinha
Chief Hydraulic Engineer	:	Shri B. Chaudhuri
Labour Adviser & Industrial Relations Officer (I/C)	:	Shri S. Ghosh
Chief Medical Officer	:	Dr. A. Sircar
Chief Engineer	:	Shri A.K. Mehera
Chief Vigilance Officer	:	Shri S.K. Choudhary
Chief Mechanical Engineer	:	Shri A. V. Ramana
Land Manager (I/C)	:	Smt. S. Pradhan
Chief Materials Manager (I/C)	:	Shri S. Ghosh
Legal Adviser	:	Smt. N. Sarkar
Director (Planning & Research) (I/C)	:	Smt. Rebecca Das



PRINCIPAL OFFICERS

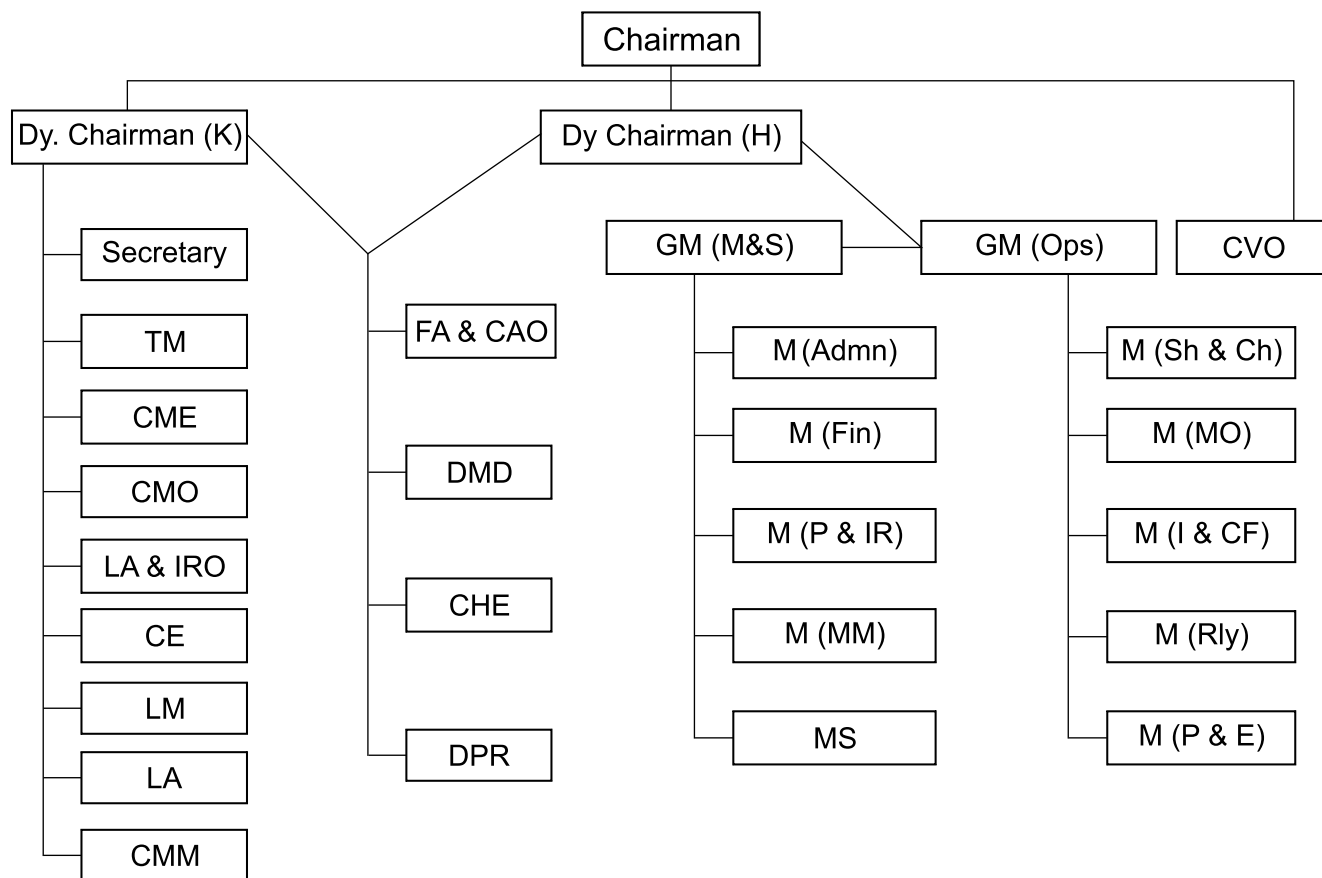
As on 31st March, 2013

Haldia Dock Complex

General Manager (M&S)	:	Shri B. Ray Chaudhuri
General Manager (Ops)	:	Vacant
Manager (Shipping & Cargo Handling)	:	Shri D. Nayak
Manager (Marine Operations)	:	Shri S.N. Chaubey
Manager (Administration)	:	Shri A.K. Dutta
Manager (Railway Operations) (I/C)	:	Shri B. S. Shinde
Manager (Personnel & Industrial Relations)	:	Shri H.S. Banerjee
Manager (Plant & Equipment)	:	Shri S. Mukhopadhyay
Manager (Finance) (I/C)	:	Shri R. C. Jena
Medical Superintendent	:	Dr. P. Bhattacharjee
Manager (Materials Management)	:	Shri P.S. Brahma
Manager (I & CF)	:	Shri U.K. Kundu



Organisation Chart



Legends :

CVO	: Chief Vigilance Officer
TM	: Traffic Manager
CME	: Chief Mechanical Engineer
CMO	: Chief Medical Officer
LA&IRO	: Labour Adviser & Industrial Relations Officer
CE	: Chief Engineer
LM	: Land Manager
LA	: Legal Adviser
CMM	: Chief Materials Manager
FA & CAO	: Financial Adviser & Chief Accounts Officer
DMD	: Director, Marine Department
CHE	: Chief Hydraulic Engineer
DPR	: Director (Planning & Research)

GM (M&S)	: General Manager (Management & Services)
GM (Ops.)	: General Manager (Operations)
M (Admn)	: Manager (Administration)
M (Sh & CH)	: Manager (Shipping & Cargo Handling)
M (Fin)	: Manager (Finance)
M (MO)	: Manager (Marine Operations)
M (P&IR)	: Manager (Personnel & Industrial Relations)
M (I&CF)	: Manager (Infrastructure & Civic Facilities)
M (MM)	: Manager (Materials Management)
M (Rly)	: Manager (Railway)
MS	: Medical Superintendent
M (P&E)	: Manager (Plant & Equipment)



INDEX TO CONTENTS

CONTENTS		Page
CHAPTER - I Special Features for the year 2012-2013	1 - 5
CHAPTER - II Review of Traffic	6 - 20
CHAPTER - III Review of Financial Position	21 - 26
CHAPTER - IV Port Performance	27 - 37
CHAPTER - V Navigational Channel to the Port	38 - 44
CHAPTER - VI Plan and Non-Plan Works	45 - 50
CHAPTER - VII Staff position, Welfare Measures and Industrial Relations	51 - 57
Port Statistics in Tables	58 - 114



LIST OF TABLES

Table No.	Subject		Page No.
I	Vital Port Statistics	58-70
II	Traffic handled in 2012-2013	71-73
III	Flag wise distribution of cargo handled in 2012-2013	74
IV	Distribution of Export cargo according to the destination during the year 2012-2013	75-77
V	Distribution of Import cargo according to the origin during the year 2012-2013	78-80
VI	Number and type of containers handled during the year 2012-2013	81-82
VII	Number and size of ships which left the port during the year 2012-2013	83-84
VIII	Performance of cargo ships during the year 2012-2013	85-86
IX	Distribution of pre-Berthing delay according to reasons in 2012-2013	87-88
X	Distribution of idle time at Berth according to reasons during 2012-2013	89-90
XI	Berth occupancy in 2012-2013	91-92
Appendix-I	Berth-wise Traffic in 2012-2013	93-95
XII	Availability of cargo handling equipment during 2012-2013	96-97
XIII	Utilization of cargo handling equipment during 2012-2013	98-99
XIV	Shore labour productivity for the year 2012-2013	100-101
XV	Productivity of Calcutta Dock Labour Board for the year 2012-2013	102
XVI	Containerized cargo and Tareweight of containers in 2012-2013	103-104
XVII	Commodity-wise export cargo received by different modes of transport during the year 2012-2013	105-106
XVIII	Commodity-wise import cargo despatched by different modes of transport from the port during the year 2012-2013	107-108
XIX	Quantity dredged during the year 2012-2013	109 -110
XX	Employment of ports - class-wise as on 31.03.2013	111
XXI	Particulars of accidents in the year 2012-2013	112
XXII	Financial Indicators	113
XXIII	Capital expenditures of Plan and Non-Plan Schemes	114