

HIGHLIGHTS OF PERFORMANCE OF SMP, KOLKATA (erstwhile KoPT)				
Period : April-July 2021 vis-à-vis April-July 2020				
	April-July 2021	April-July 2020	Absolute Rise / Fall	% Rise/ Fall
[In '000 tonnes]				
1. <u>CARGO TRAFFIC:</u>				
KDS	4502	4096	406	9.91
HDC	13813	12186	1627	13.35
Total for SMP, Kolkata	18315	16282	2033	12.49
2. <u>CONTAINER TRAFFIC:</u>				
KDS (I) (in TEUs)	194334	148626	45708	30.75
(II) (In '000 tonnes)	2907	2448	459	18.75
HDC (I) (in TEUs)	61707	41903	19804	47.26
(II) (In '000 tonnes)	1268	818	450	55.01
Total (I) (in TEUs)	256041	190529	65512	34.38
(II) (In '000 tonnes)	4175	3266	909	27.83
3. <u>COMMODITYWISE TRAFFIC:</u>				
3.1KDS:				
(a) POL (Product)	76	79	-3	-3.80
(b) Other Liquid (Including Veg. Oil)	106	98	8	8.16
(c) Fertiliser + FRM	126	87	39	44.83
(d) Coking Coal	-	24	-24	-
(e) Other Coal/Coke	215	614	-399	-64.98
(f) Timber	-	-	-	-
(g) Pulses /Peas	15	43	-28	-65.12
(h) Fly Ash	709	462	247	53.46
(i) Limestone	-	-	-	-
(j) Iron & Steel	35	60	-25	-41.67
(k) Other Cargo	3220	2629	591	22.48
KDS (Total)	4502	4096	406	9.91
3.2HDC:				
(a) POL (Crude)	-	21	-21	-
(b) POL (Product)	1336	1137	199	17.50
(c) LPG	1564	1541	23	1.49
(d) Other Liquid (Including Veg. Oil)	1683	1341	342	25.50
(e) Thermal Coal	89	468	-379	- 80.98
(f) Iron Ore	775	1595	-820	-51.41
(g) Coking Coal	2931	1395	1536	110.11
(h) Other Coal /Coke	1500	1402	98	6.99
(i) Limestone	883	424	459	108.25
(j) Iron & Steel	234	814	-580	-71.25
(k) Other Cargo	2818	2048	770	37.60
HDC (Total)	13813	12186	1627	13.35
4. <u>SHIP CALL:</u>				
KDS	328	315	13	4.13
HDC	660	615	45	7.32
Total	988	930	58	6.24

Figures are provisional.

SMP, Kolkata (erstwhile KoPT)
Highlights of Achievements in July, 2021

I. NOTABLE ACHIEVEMENTS / DEVELOPMENTS

Maiden Coal Movement from NSD to Bangladesh

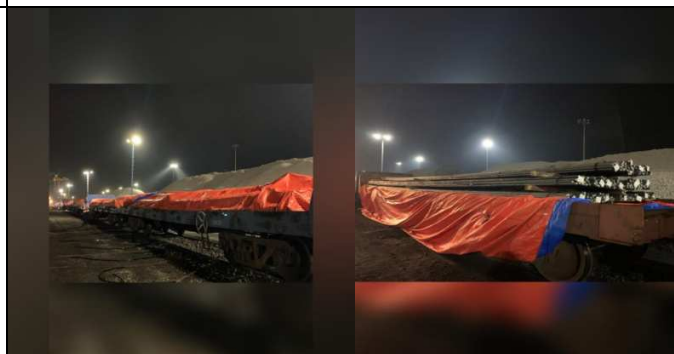
The first Coal Export Movement from NSD, SMP, Kolkata to Khulna, Bangladesh was flagged off on 02.07.2021, for Rampal Power Station set up by Bangladesh India Friendship Power Company Ltd., a JV between NTPC & Bangladesh Power Development Board.

KPD is the hub of Bangladesh Bulk traffic for Rice, Sponge Iron, Fly Ash & Coal exports. There is a projection of monthly export consignments of 20,000 tonnes of Thermal Coal from SMP, Kolkata.



First ever Rakes with consignment from JSPL Corporate

On 17.07.2021, first ever rakes with consignment of Steel for export from JSPL Corporate, materialized at TMILL (Tata's Terminal), HDC, through the vessel 'MV Vantage Dream' loading 21,132 tonnes of TMT bars & other steel products, for shipment to Hong Kong.



Installation of LMO vessel filling up at Centenary Hospital

A 3000- litre-capacity LMO vessel was installed at the Centenary Hospital of SMP, Kolkata on 13.7.2021 with oxygen being filled up by an accredited agency, which will go a long way in providing succor to the ailing patients of the Hospital, including those suffering from critical Covid ailments.



Discharge of Ro Ro LPG at KPD

LPG Tankers were discharged through Ro-Ro shipment via the IWAI vessels at KPD on 26.07.2021, the cargo bound for immediate neighbourhood. It was loaded at HDC as a trial run.



Handling of 1st automobile domestic rake at KPD, KDS of SMP, Kolkata

First Automobile domestic rake (NMG) with 125 Hyundai Glovis cars, rolled out at the newly repaired yard at 28-29 KPD Sheds and open area on 27.07.2021, which is fully domestic cargo coming in from Walajabad near Chennai.



Observance of National Doctors' Day 2021

SMP, Kolkata, observed the National Doctors' Day on 1st July 2021 as a token of our deep respect and gratitude to them for being the lifesavers and solemnly commemorated their contribution during the critical phases of Covid 19.



Tribute to Dr. Syama Prasad Mookerjee

In commemoration and extolment of the services rendered by the great national leader, barrister and patriot, Dr. Syama Prasad Mookerjee, SMP, Kolkata paid rich tributes to him, on his birthday, viz. 6th of July 2021.



Relief for Yaas Cyclone affected people

SMPK has been standing strong with the community affected by Yaas Cyclone at Sagar accepting humbly the responsibility of distributing dry grocery, essential items and hygiene kits to the 500 affected families in collaboration with Bharat Sevasram Sangha, Sagar.



II. CARGO THROUGHPUT :

- SMP, Kolkata handled 18.315 million tonnes (mt) of cargo during April- July 2021, vis-à-vis 16.282 mt during April- July 2020, registering a growth of 12.49%.
- HDC handled 13.813 mt of cargo during April- July 2021 vis-à-vis 12.186 mt during April - July 2020 (recording a growth of 13.35%). KDS handled 4.502 mt of cargo in April- July 2021 vis-à-vis 4.096 mt during April - July 2020 (recording a growth of 9.91%).
- HDC registered growth in respect of POL(Product), LPG, Vegetable Oil, Other Liquid, Coking Coal, Other Coal / Coke, Manganese Ore, Other Ore, Limestone, Rock Phosphate, Dolomite, Fly Ash, Other Miscellaneous Cargo, Containers etc. while KDS registered growth in respect of Vegetable Oil, Fertiliser, Fly Ash, Other Miscellaneous Cargo, IVW traffic and Containers.

II. CONTAINER TRAFFIC :

- SMP, Kolkata handled 2,56,041 TEUs (KDS: 1,94,334 & HDC: 61,707) during April - July 2021 vis-à-vis 1,90,529 TEUs (KDS: 1,48,626 & HDC: 41,903) during April- July 2020, registering a high growth of 34.38%.
- While HDC recorded a steep growth of 47.26%, KDS too registered a high growth of 30.75%, during April - July 2021 vis-à-vis April- July 2020, in handling Container TEUs.

III. SHIP TRAFFIC:

- During April - July 2021, 988 ships (KDS: 328, HDC: 660) called at SMP, Kolkata. 1323 vessels (660 inward; 663 outward) passed through Eden Channel during April - July 2021 to / from Haldia.

IV. RAILWAY TRAFFIC :

- During April-July 2021, SMP, Kolkata handled rail-borne traffic of 9.728 mt (KDS-1.67 mt & HDC-8.058 mt) against 8.404 mt (KDS-1.514 mt & HDC-6.89 mt) in April-July 2020 registering a high growth of 15.75%. During April -July 2021, 417 trains were received and 417 dispatched at KDS; at HDC, 1739 trains were received and 1742 were dispatched.
-