



Bid Number/बोली क्रमांक (बिड संख्या):  
GEM/2024/B/5066374  
Dated/दिनांक : 01-07-2024

### Bid Document/ बिड दस्तावेज़

| Bid Details/बिड विवरण  |  |
|--|--|
| Bid End Date/Time/बिड बंद होने की तारीख/समय  | 23-07-2024 15:00:00  |
| Bid Opening Date/Time/बिड खुलने की तारीख/समय   | 23-07-2024 15:30:00  |
| Bid Offer Validity (From End Date)/बिड पेशकश वैधता (बंद होने की तारीख से)                | 120 (Days)   |
| Ministry/State Name/मंत्रालय/राज्य का नाम  | Ministry Of Ports, Shipping And Waterways  |
| Department Name/विभाग का नाम   | Na   |
| Organisation Name/संगठन का नाम   | Kolkata Port Trust   |
| Office Name/कार्यालय का नाम  | Haldia Dock Complex  |
| Total Quantity/कुल मात्रा  | 382  |
| Item Category/मद केटेगरी   | BHEL Spare-1 , BHEL Spare-2 , BHEL Spare-3 , BHEL Spare-4 , BHEL Spare-5 , BHEL Spare-6 , BHEL Spare-7 , BHEL Spare-8 , BHEL Spare-9 , BHEL Spare-10 , BHEL Spare-11 , BHEL Spare-12 , BHEL Spare-13 , BHEL Spare-14 , BHEL Spare-15 , BHEL Spare-16 , BHEL Spare-17 , BHEL Spare-18 , BHEL Spare-19 , BHEL Spare-20 , BHEL Spare-21 , BHEL Spare-22 , BHEL Spare-23 , BHEL Spare-24 , BHEL Spare-25 , BHEL Spare-26 , BHEL Spare-27 , BHEL Spare-28 , BHEL Spare-29 , BHEL Spare-30 , BHEL Spare-31 , BHEL Spare-32 , BHEL Spare-33 , BHEL Spare-34 , BHEL Spare-35 , BHEL Spare-36 , BHEL Spare-37 , BHEL Spare-38 , BHEL Spare-39 , BHEL Spare-40 , BHEL Spare-41 , BHEL Spare-42 , BHEL Spare-43 |
| BOQ Title/बीओक्यू शीर्षक   | Supply and delivery of Spares for BHEL make Locomotives to HDC   |
| MSE Exemption for Years of Experience and Turnover/ अनुभव के वर्षों से एमएसई छूट         | No   |
| Startup Exemption for Years of Experience and Turnover/ अनुभव के वर्षों से स्टार्टअप छूट | No   |
| Document required from seller/विक्रेता से मांगे गए दस्तावेज़                             | Experience Criteria,Certificate (Requested in ATC),Additional Doc 1 (Requested in ATC),Compliance of BoQ specification and supporting document<br>*In case any bidder is seeking exemption from Experience / Turnover Criteria, the supporting documents to prove his eligibility for exemption must be uploaded for evaluation by the buyer   |
| Bid to RA enabled/बिड से रिवर्स नीलामी सक्रिय किया                                       | No   |
| Type of Bid/बिड का प्रकार  | Two Packet Bid   |

| <b>Bid Details/बिड विवरण</b>  |                       |
|---|-----------------------|
| <b>Primary product category</b>   | BHEL Spare-1          |
| <b>Time allowed for Technical Clarifications during technical evaluation/तकनीकी मूल्यांकन के दौरान तकनीकी स्पष्टीकरण हेतु अनुमत समय</b> | 7 Days                |
| <b>Inspection Required (By Empanelled Inspection Authority / Agencies pre-registered with GeM)</b>                                      | No                    |
| <b>Evaluation Method/मूल्यांकन पद्धति</b>   | Item wise evaluation/ |

**EMD Detail/ईएमडी विवरण**

|  |                     |
|--|---------------------|
| Advisory Bank/एडवाइजरी बैंक                | State Bank of India |
| Schedule 1 EMD Amount/ईएमडी राशि (In INR)  | 228                 |
| Schedule 2 EMD Amount/ईएमडी राशि (In INR)  | 120                 |
| Schedule 3 EMD Amount/ईएमडी राशि (In INR)  | 210                 |
| Schedule 4 EMD Amount/ईएमडी राशि (In INR)  | 26                  |
| Schedule 5 EMD Amount/ईएमडी राशि (In INR)  | 16                  |
| Schedule 6 EMD Amount/ईएमडी राशि (In INR)  | 50                  |
| Schedule 7 EMD Amount/ईएमडी राशि (In INR)  | 37                  |
| Schedule 8 EMD Amount/ईएमडी राशि (In INR)  | 144                 |
| Schedule 9 EMD Amount/ईएमडी राशि (In INR)  | 126                 |
| Schedule 10 EMD Amount/ईएमडी राशि (In INR) | 144                 |
| Schedule 11 EMD Amount/ईएमडी राशि (In INR) | 132                 |
| Schedule 12 EMD Amount/ईएमडी राशि (In INR) | 33                  |
| Schedule 13 EMD Amount/ईएमडी राशि (In INR) | 23                  |
| Schedule 14 EMD Amount/ईएमडी राशि (In INR) | 13                  |
| Schedule 15 EMD Amount/ईएमडी राशि (In INR) | 8                   |
| Schedule 16 EMD Amount/ईएमडी राशि (In INR) | 5                   |
| Schedule 17 EMD Amount/ईएमडी राशि (In INR) | 112                 |
| Schedule 18 EMD Amount/ईएमडी राशि (In INR) | 103                 |
| Schedule 19 EMD Amount/ईएमडी राशि (In INR) | 57                  |
| Schedule 20 EMD Amount/ईएमडी राशि (In INR) | 36                  |

|  |      |
|--|------|
| Schedule 21 EMD Amount/ईएमडी राशि (In INR) | 136  |
| Schedule 22 EMD Amount/ईएमडी राशि (In INR) | 108  |
| Schedule 23 EMD Amount/ईएमडी राशि (In INR) | 102  |
| Schedule 24 EMD Amount/ईएमडी राशि (In INR) | 112  |
| Schedule 25 EMD Amount/ईएमडी राशि (In INR) | 1280 |
| Schedule 26 EMD Amount/ईएमडी राशि (In INR) | 53   |
| Schedule 27 EMD Amount/ईएमडी राशि (In INR) | 125  |
| Schedule 28 EMD Amount/ईएमडी राशि (In INR) | 116  |
| Schedule 29 EMD Amount/ईएमडी राशि (In INR) | 114  |
| Schedule 30 EMD Amount/ईएमडी राशि (In INR) | 152  |
| Schedule 31 EMD Amount/ईएमडी राशि (In INR) | 144  |
| Schedule 32 EMD Amount/ईएमडी राशि (In INR) | 54   |
| Schedule 33 EMD Amount/ईएमडी राशि (In INR) | 54   |
| Schedule 34 EMD Amount/ईएमडी राशि (In INR) | 9    |
| Schedule 35 EMD Amount/ईएमडी राशि (In INR) | 1800 |
| Schedule 36 EMD Amount/ईएमडी राशि (In INR) | 29   |
| Schedule 37 EMD Amount/ईएमडी राशि (In INR) | 29   |
| Schedule 38 EMD Amount/ईएमडी राशि (In INR) | 29   |
| Schedule 39 EMD Amount/ईएमडी राशि (In INR) | 35   |
| Schedule 40 EMD Amount/ईएमडी राशि (In INR) | 675  |
| Schedule 41 EMD Amount/ईएमडी राशि (In INR) | 18   |
| Schedule 42 EMD Amount/ईएमडी राशि (In INR) | 160  |
| Schedule 43 EMD Amount/ईएमडी राशि (In INR) | 225  |

#### ePBG Detail/ईपीबीजी विवरण

|                   |    |
|-------------------|----|
| Required/आवश्यकता | No |
|-------------------|----|

(a). EMD EXEMPTION: The bidder seeking EMD exemption, must submit the valid supporting document for the relevant category as per GeM GTC with the bid. Under MSE category, only manufacturers for goods and Service Providers for Services are eligible for exemption from EMD. Traders are excluded from the purview of this Policy./जेम की शर्तों के अनुसार ईएमडी छूट के इच्छुक बिडर को संबंधित केटेगरी के लिए बिड के साथ वैध समर्थित दस्तावेज प्रस्तुत करने हैं।

एमएसई केटेगरी के अंतर्गत केवल वस्तुओं के लिए विनिर्माता तथा सेवाओं के लिए सेवा प्रदाता ईएमडी से छूट के पात्र हैं। व्यापारियों को इस नीति के दायरे से बाहर रखा गया है।

(b). The EMD Amount will be applicable for each schedule/group selected during Bid creation.

(c). EMD & Performance security should be in favour of Beneficiary, wherever it is applicable./ईएमडी और संपादन जमानत राशि, जहां यह लागू होती है, लाभार्थी के पक्ष में होनी चाहिए।

**Beneficiary/लाभार्थी :**

General Manager (Finance)

Finance Division, Haldia Dock Complex, SMPK, Ministry of Ports, Shipping and Waterways

(Abhijit Gupta)

**Splitting/विभाजन**

Bid splitting not applied/बोली विभाजन लागू नहीं किया गया.

**Reserved for Make In India products**

|                                     |     |
|-------------------------------------|-----|
| Reserved for Make In India products | Yes |
|-------------------------------------|-----|

**MSE Purchase Preference/एमएसई खरीद वरीयता**

|   |     |
|---|-----|
| MSE Purchase Preference/एमएसई खरीद वरीयता | Yes |
|---|-----|

1. Bid reserved for Make In India products: : Procurement under this bid is reserved for purchase from Class 1 local supplier as defined in public procurement (Preference to Make in India), Order 2017 as amended from time to time and its subsequent Orders/Notifications issued by concerned Nodal Ministry for specific Goods/Products. However, eligible micro and small enterprises will be allowed to participate. The minimum local content to qualify as a class 1 local supplier is denoted in the bid document. All bidders must upload a certificate from the OEM regarding the percentage of the local content and the details of locations at which the local value addition is made along with their bid, failing which the bid is liable to be rejected. In case the bid value is more than Rs 10 Crore, the declaration relating to percentage of local content shall be certified by the statutory auditor or cost auditor, if the OEM is a company and by a practicing cost accountant or a chartered accountant for OEMs other than companies as per the Public Procurement (preference to Make-in -India) order 2017 dated 04.06.2020 . In case Buyer has selected Purchase preference to Micro and Small Enterprises clause in the bid, the same will get precedence over this clause.

2. Purchase preference will be given to MSEs having valid Udyam Registration and whose credentials are validated online through Udyam Registration portal as defined in Public Procurement Policy for Micro and Small Enterprises (MSEs) Order, 2012 dated 23.03.2012 issued by Ministry of Micro, Small and Medium Enterprises and its subsequent Orders/Notifications issued by concerned Ministry. If the bidder wants to avail themselves of the Purchase preference, the bidder must be the manufacturer / OEM of the offered product on GeM. Traders are excluded from the purview of Public Procurement Policy for Micro and Small Enterprises and hence resellers offering products manufactured by some other OEM are not eligible for any purchase preference. In respect of bid for Services, the bidder must be the Service provider of the offered Service. Relevant documentary evidence in this regard shall be uploaded along with the bid in respect of the offered product or service and Buyer will decide eligibility for purchase preference based on documentary evidence submitted, while evaluating the bid. If L-1 is not an MSE and MSE Seller (s) has / have quoted price within L-1+ 15% (Selected by Buyer) of margin of purchase preference /price band defined in relevant policy, such MSE Seller shall be given opportunity to match L-1 price and contract will be awarded for 25% (selected by Buyer) percentage of total quantity. The buyers are advised to refer the OM No. F.1/4/2021-PPD dated 18.05.2023 [OM No.1 4 2021 PPD dated 18.05.2023](#) for compliance of Concurrent application of Public Procurement Policy for Micro and Small Enterprises Order, 2012 and Public Procurement (Preference to Make in India) Order, 2017. Benefits of MSE will be allowed only if seller is validated on-line in GeM profile as well as validated and approved by Buyer after evaluation of documents

submitted.

3. Estimated Bid Value indicated above is being declared solely for the purpose of guidance on EMD amount and for determining the Eligibility Criteria related to Turn Over, Past Performance and Project / Past Experience etc. This has no relevance or bearing on the price to be quoted by the bidders and is also not going to have any impact on bid participation. Also this is not going to be used as a criteria in determining reasonableness of quoted prices which would be determined by the buyer based on its own assessment of reasonableness and based on competitive prices received in Bid / RA process.

**Evaluation Method ( Item Wise Evaluation Method )**

Contract will be awarded schedulewise and the determination of L1 will be done separately for each schedule. The details of item-consignee combination covered under each schedule are as under:

| <b>Evaluation Schedules</b> | <b>Item/Category</b> | <b>Quantity</b> |
|-----------------------------|----------------------|-----------------|
| Schedule 1                  | Bhel Spare-1         | 12              |
| Schedule 2                  | Bhel Spare-2         | 3               |
| Schedule 3                  | Bhel Spare-3         | 3               |
| Schedule 4                  | Bhel Spare-4         | 3               |
| Schedule 5                  | Bhel Spare-5         | 2               |
| Schedule 6                  | Bhel Spare-6         | 6               |
| Schedule 7                  | Bhel Spare-7         | 6               |
| Schedule 8                  | Bhel Spare-8         | 6               |
| Schedule 9                  | Bhel Spare-9         | 6               |
| Schedule 10                 | Bhel Spare-10        | 6               |
| Schedule 11                 | Bhel Spare-11        | 6               |
| Schedule 12                 | Bhel Spare-12        | 6               |
| Schedule 13                 | Bhel Spare-13        | 6               |
| Schedule 14                 | Bhel Spare-14        | 3               |
| Schedule 15                 | Bhel Spare-15        | 6               |
| Schedule 16                 | Bhel Spare-16        | 8               |
| Schedule 17                 | Bhel Spare-17        | 7               |
| Schedule 18                 | Bhel Spare-18        | 1               |
| Schedule 19                 | Bhel Spare-19        | 12              |
| Schedule 20                 | Bhel Spare-20        | 6               |
| Schedule 21                 | Bhel Spare-21        | 1               |
| Schedule 22                 | Bhel Spare-22        | 6               |
| Schedule 23                 | Bhel Spare-23        | 3               |
| Schedule 24                 | Bhel Spare-24        | 2               |
| Schedule 25                 | Bhel Spare-25        | 200             |
| Schedule 26                 | Bhel Spare-26        | 1               |

|             |               |   |
|-------------|---------------|---|
| Schedule 27 | Bhel Spare-27 | 2 |
| Schedule 28 | Bhel Spare-28 | 2 |
| Schedule 29 | Bhel Spare-29 | 2 |
| Schedule 30 | Bhel Spare-30 | 8 |
| Schedule 31 | Bhel Spare-31 | 8 |
| Schedule 32 | Bhel Spare-32 | 2 |
| Schedule 33 | Bhel Spare-33 | 2 |
| Schedule 34 | Bhel Spare-34 | 2 |
| Schedule 35 | Bhel Spare-35 | 2 |
| Schedule 36 | Bhel Spare-36 | 2 |
| Schedule 37 | Bhel Spare-37 | 6 |
| Schedule 38 | Bhel Spare-38 | 6 |
| Schedule 39 | Bhel Spare-39 | 6 |
| Schedule 40 | Bhel Spare-40 | 1 |
| Schedule 41 | Bhel Spare-41 | 2 |
| Schedule 42 | Bhel Spare-42 | 1 |
| Schedule 43 | Bhel Spare-43 | 1 |

### **BHEL Spare-1**

**(Minimum 50% Local Content required for qualifying as Class 1 Local Supplier)**

**Technical Specifications/तकनीकी विशिष्टियाँ**

|                               |                           |
|-------------------------------|---------------------------|
| <b>Specification Document</b> | <a href="#">View File</a> |
| <b>BOQ Detail Document</b>    | <a href="#">View File</a> |

Advisory-Please refer attached BOQ document for detailed consignee list and delivery period.

**Consignees/Reporting Officer/प्रेषिती/रिपोर्टिंग अधिकारी and/ तथा Quantity/मात्र**

| S.No./क्र. सं. | Consignee Reporting/Officer/ परेषिती/रिपोर्टिंग अधिकारी | Address/पता  | Quantity/मात्रा | Delivery Days/डिलीवरी के दिन |
|----------------|---|--|-----------------|------------------------------|
| 1              | Emanuel Singh   | 721607,Jawahar Tower Connector Building, Haldia Dock Complex, Kolkata Port Trust | 12              | 120                          |

### BHEL Spare-2

(Minimum 50% Local Content required for qualifying as Class 1 Local Supplier)

Technical Specifications/तकनीकी विशिष्टियाँ

|                        |                           |
|------------------------|---------------------------|
| Specification Document | <a href="#">View File</a> |
| BOQ Detail Document    | <a href="#">View File</a> |

Advisory-Please refer attached BOQ document for detailed consignee list and delivery period.

Consignees/Reporting Officer/परेषिती/रिपोर्टिंग अधिकारी and/ तथा Quantity/मात्रा

| S.No./क्र. सं. | Consignee Reporting/Officer/ परेषिती/रिपोर्टिंग अधिकारी | Address/पता  | Quantity/मात्रा | Delivery Days/डिलीवरी के दिन |
|----------------|---|--|-----------------|------------------------------|
| 1              | Emanuel Singh   | 721607,Jawahar Tower Connector Building, Haldia Dock Complex, Kolkata Port Trust | 3               | 120                          |

### BHEL Spare-3

(Minimum 50% Local Content required for qualifying as Class 1 Local Supplier)

Technical Specifications/तकनीकी विशिष्टियाँ

|                        |                           |
|------------------------|---------------------------|
| Specification Document | <a href="#">View File</a> |
| BOQ Detail Document    | <a href="#">View File</a> |

Advisory-Please refer attached BOQ document for detailed consignee list and delivery period.

**Consignees/Reporting Officer/परेषिती/रिपोर्टिंग अधिकारी and/ तथा Quantity/मात्र**

| S.No./क्र. सं. | Consignee Reporting/Officer/ परेषिती/रिपोर्टिंग अधिकारी | Address/पता  | Quantity/मात्र | Delivery Days/डिलीवरी के दिन |
|----------------|---|--|----------------|------------------------------|
| 1              | Emanuel Singh   | 721607,Jawahar Tower Connector Building, Haldia Dock Complex, Kolkata Port Trust | 3              | 120                          |

**BHEL Spare-4****(Minimum 50% Local Content required for qualifying as Class 1 Local Supplier)****Technical Specifications/तकनीकी विशिष्टियाँ**

|                               |                           |
|-------------------------------|---------------------------|
| <b>Specification Document</b> | <a href="#">View File</a> |
| <b>BOQ Detail Document</b>    | <a href="#">View File</a> |

Advisory-Please refer attached BOQ document for detailed consignee list and delivery period.

**Consignees/Reporting Officer/परेषिती/रिपोर्टिंग अधिकारी and/ तथा Quantity/मात्र**

| S.No./क्र. सं. | Consignee Reporting/Officer/ परेषिती/रिपोर्टिंग अधिकारी | Address/पता  | Quantity/मात्र | Delivery Days/डिलीवरी के दिन |
|----------------|---|--|----------------|------------------------------|
| 1              | Emanuel Singh   | 721607,Jawahar Tower Connector Building, Haldia Dock Complex, Kolkata Port Trust | 3              | 120                          |

**BHEL Spare-5****(Minimum 50% Local Content required for qualifying as Class 1 Local Supplier)**



**Technical Specifications/तकनीकी विशिष्टियाँ**

|                               |                           |
|-------------------------------|---------------------------|
| <b>Specification Document</b> | <a href="#">View File</a> |
| <b>BOQ Detail Document</b>    | <a href="#">View File</a> |

Advisory-Please refer attached BOQ document for detailed consignee list and delivery period.

**Consignees/Reporting Officer/परेषिती/रिपोर्टिंग अधिकारी and/ तथा Quantity/मात्र**

| <b>S.No./क्र. सं.</b> | <b>Consignee Reporting/Officer/ परेषिती/रिपोर्टिंग अधिकारी</b> | <b>Address/पता</b>   | <b>Quantity/मात्र</b> | <b>Delivery Days/डिलीवरी के दिन</b> |
|-----------------------|--|--|-----------------------|-------------------------------------|
| 1                     | Emanuel Singh  | 721607,Jawahar Tower Connector Building, Haldia Dock Complex, Kolkata Port Trust | 2                     | 120                                 |

**BHEL Spare-6**

**(Minimum 50% Local Content required for qualifying as Class 1 Local Supplier)**

**Technical Specifications/तकनीकी विशिष्टियाँ**

|                               |                           |
|-------------------------------|---------------------------|
| <b>Specification Document</b> | <a href="#">View File</a> |
| <b>BOQ Detail Document</b>    | <a href="#">View File</a> |

Advisory-Please refer attached BOQ document for detailed consignee list and delivery period.

**Consignees/Reporting Officer/परेषिती/रिपोर्टिंग अधिकारी and/ तथा Quantity/मात्र**

| S.No./क्र. सं. | Consignee Reporting/Officer/ परेषिती/रिपोर्टिंग अधिकारी | Address/पता  | Quantity/मात्रा | Delivery Days/डिलीवरी के दिन |
|----------------|---|--|-----------------|------------------------------|
| 1              | Emanuel Singh   | 721607,Jawahar Tower Connector Building, Haldia Dock Complex, Kolkata Port Trust | 6               | 120                          |

### BHEL Spare-7

(Minimum 50% Local Content required for qualifying as Class 1 Local Supplier)

Technical Specifications/तकनीकी विशिष्टियाँ

|                        |                           |
|------------------------|---------------------------|
| Specification Document | <a href="#">View File</a> |
| BOQ Detail Document    | <a href="#">View File</a> |

Advisory-Please refer attached BOQ document for detailed consignee list and delivery period.

Consignees/Reporting Officer/परेषिती/रिपोर्टिंग अधिकारी and/ तथा Quantity/मात्रा

| S.No./क्र. सं. | Consignee Reporting/Officer/ परेषिती/रिपोर्टिंग अधिकारी | Address/पता  | Quantity/मात्रा | Delivery Days/डिलीवरी के दिन |
|----------------|---|--|-----------------|------------------------------|
| 1              | Emanuel Singh   | 721607,Jawahar Tower Connector Building, Haldia Dock Complex, Kolkata Port Trust | 6               | 120                          |

### BHEL Spare-8

(Minimum 50% Local Content required for qualifying as Class 1 Local Supplier)

Technical Specifications/तकनीकी विशिष्टियाँ

|                        |                           |
|------------------------|---------------------------|
| Specification Document | <a href="#">View File</a> |
| BOQ Detail Document    | <a href="#">View File</a> |

Advisory-Please refer attached BOQ document for detailed consignee list and delivery period.

**Consignees/Reporting Officer/परेषिती/रिपोर्टिंग अधिकारी and/ तथा Quantity/मात्र**

| S.No./क्र. सं. | Consignee Reporting/Officer/ परेषिती/रिपोर्टिंग अधिकारी | Address/पता  | Quantity/मात्र | Delivery Days/डिलीवरी के दिन |
|----------------|---|--|----------------|------------------------------|
| 1              | Emanuel Singh   | 721607,Jawahar Tower Connector Building, Haldia Dock Complex, Kolkata Port Trust | 6              | 120                          |

**BHEL Spare-9****(Minimum 50% Local Content required for qualifying as Class 1 Local Supplier)****Technical Specifications/तकनीकी विशिष्टियाँ**

|                               |                           |
|-------------------------------|---------------------------|
| <b>Specification Document</b> | <a href="#">View File</a> |
| <b>BOQ Detail Document</b>    | <a href="#">View File</a> |

Advisory-Please refer attached BOQ document for detailed consignee list and delivery period.

**Consignees/Reporting Officer/परेषिती/रिपोर्टिंग अधिकारी and/ तथा Quantity/मात्र**

| S.No./क्र. सं. | Consignee Reporting/Officer/ परेषिती/रिपोर्टिंग अधिकारी | Address/पता  | Quantity/मात्र | Delivery Days/डिलीवरी के दिन |
|----------------|---|--|----------------|------------------------------|
| 1              | Emanuel Singh   | 721607,Jawahar Tower Connector Building, Haldia Dock Complex, Kolkata Port Trust | 6              | 120                          |

**BHEL Spare-10****(Minimum 50% Local Content required for qualifying as Class 1 Local Supplier)**

**Technical Specifications/तकनीकी विशिष्टियाँ**

|                               |                           |
|-------------------------------|---------------------------|
| <b>Specification Document</b> | <a href="#">View File</a> |
| <b>BOQ Detail Document</b>    | <a href="#">View File</a> |

Advisory-Please refer attached BOQ document for detailed consignee list and delivery period.

**Consignees/Reporting Officer/परेषिती/रिपोर्टिंग अधिकारी and/ तथा Quantity/मात्र**

| <b>S.No./क्र. सं.</b> | <b>Consignee Reporting/Officer/ परेषिती/रिपोर्टिंग अधिकारी</b> | <b>Address/पता</b>   | <b>Quantity/मात्र</b> | <b>Delivery Days/डिलीवरी के दिन</b> |
|-----------------------|--|--|-----------------------|-------------------------------------|
| 1                     | Emanuel Singh  | 721607,Jawahar Tower Connector Building, Haldia Dock Complex, Kolkata Port Trust | 6                     | 120                                 |

**BHEL Spare-11**

**(Minimum 50% Local Content required for qualifying as Class 1 Local Supplier)**

**Technical Specifications/तकनीकी विशिष्टियाँ**

|                               |                           |
|-------------------------------|---------------------------|
| <b>Specification Document</b> | <a href="#">View File</a> |
| <b>BOQ Detail Document</b>    | <a href="#">View File</a> |

Advisory-Please refer attached BOQ document for detailed consignee list and delivery period.

**Consignees/Reporting Officer/परेषिती/रिपोर्टिंग अधिकारी and/ तथा Quantity/मात्र**

| S.No./क्र. सं. | Consignee Reporting/Officer/ परेषिती/रिपोर्टिंग अधिकारी | Address/पता  | Quantity/मात्रा | Delivery Days/डिलीवरी के दिन |
|----------------|---|--|-----------------|------------------------------|
| 1              | Emanuel Singh   | 721607,Jawahar Tower Connector Building, Haldia Dock Complex, Kolkata Port Trust | 6               | 120                          |

### BHEL Spare-12

(Minimum 50% Local Content required for qualifying as Class 1 Local Supplier)

Technical Specifications/तकनीकी विशिष्टियाँ

|                        |                           |
|------------------------|---------------------------|
| Specification Document | <a href="#">View File</a> |
| BOQ Detail Document    | <a href="#">View File</a> |

Advisory-Please refer attached BOQ document for detailed consignee list and delivery period.

Consignees/Reporting Officer/परेषिती/रिपोर्टिंग अधिकारी and/ तथा Quantity/मात्रा

| S.No./क्र. सं. | Consignee Reporting/Officer/ परेषिती/रिपोर्टिंग अधिकारी | Address/पता  | Quantity/मात्रा | Delivery Days/डिलीवरी के दिन |
|----------------|---|--|-----------------|------------------------------|
| 1              | Emanuel Singh   | 721607,Jawahar Tower Connector Building, Haldia Dock Complex, Kolkata Port Trust | 6               | 120                          |

### BHEL Spare-13

(Minimum 50% Local Content required for qualifying as Class 1 Local Supplier)

Technical Specifications/तकनीकी विशिष्टियाँ

|                        |                           |
|------------------------|---------------------------|
| Specification Document | <a href="#">View File</a> |
| BOQ Detail Document    | <a href="#">View File</a> |

Advisory-Please refer attached BOQ document for detailed consignee list and delivery period.

**Consignees/Reporting Officer/परेषिती/रिपोर्टिंग अधिकारी and/ तथा Quantity/मात्र**

| S.No./क्र. सं. | Consignee Reporting/Officer/ परेषिती/रिपोर्टिंग अधिकारी | Address/पता  | Quantity/मात्र | Delivery Days/डिलीवरी के दिन |
|----------------|---|--|----------------|------------------------------|
| 1              | Emanuel Singh   | 721607,Jawahar Tower Connector Building, Haldia Dock Complex, Kolkata Port Trust | 6              | 120                          |

**BHEL Spare-14****(Minimum 50% Local Content required for qualifying as Class 1 Local Supplier)****Technical Specifications/तकनीकी विशिष्टियाँ**

|                               |                           |
|-------------------------------|---------------------------|
| <b>Specification Document</b> | <a href="#">View File</a> |
| <b>BOQ Detail Document</b>    | <a href="#">View File</a> |

Advisory-Please refer attached BOQ document for detailed consignee list and delivery period.

**Consignees/Reporting Officer/परेषिती/रिपोर्टिंग अधिकारी and/ तथा Quantity/मात्र**

| S.No./क्र. सं. | Consignee Reporting/Officer/ परेषिती/रिपोर्टिंग अधिकारी | Address/पता  | Quantity/मात्र | Delivery Days/डिलीवरी के दिन |
|----------------|---|--|----------------|------------------------------|
| 1              | Emanuel Singh   | 721607,Jawahar Tower Connector Building, Haldia Dock Complex, Kolkata Port Trust | 3              | 120                          |

**BHEL Spare-15****(Minimum 50% Local Content required for qualifying as Class 1 Local Supplier)**

**Technical Specifications/तकनीकी विशिष्टियाँ**

|                               |                           |
|-------------------------------|---------------------------|
| <b>Specification Document</b> | <a href="#">View File</a> |
| <b>BOQ Detail Document</b>    | <a href="#">View File</a> |

Advisory-Please refer attached BOQ document for detailed consignee list and delivery period.

**Consignees/Reporting Officer/परेषिती/रिपोर्टिंग अधिकारी and/ तथा Quantity/मात्र**

| <b>S.No./क्र. सं.</b> | <b>Consignee Reporting/Officer/ परेषिती/रिपोर्टिंग अधिकारी</b> | <b>Address/पता</b>   | <b>Quantity/मात्र</b> | <b>Delivery Days/डिलीवरी के दिन</b> |
|-----------------------|--|--|-----------------------|-------------------------------------|
| 1                     | Emanuel Singh  | 721607,Jawahar Tower Connector Building, Haldia Dock Complex, Kolkata Port Trust | 6                     | 120                                 |

**BHEL Spare-16**

**(Minimum 50% Local Content required for qualifying as Class 1 Local Supplier)**

**Technical Specifications/तकनीकी विशिष्टियाँ**

|                               |                           |
|-------------------------------|---------------------------|
| <b>Specification Document</b> | <a href="#">View File</a> |
| <b>BOQ Detail Document</b>    | <a href="#">View File</a> |

Advisory-Please refer attached BOQ document for detailed consignee list and delivery period.

**Consignees/Reporting Officer/परेषिती/रिपोर्टिंग अधिकारी and/ तथा Quantity/मात्र**

| S.No./क्र. सं. | Consignee Reporting/Officer/ परेषिती/रिपोर्टिंग अधिकारी | Address/पता  | Quantity/मात्रा | Delivery Days/डिलीवरी के दिन |
|----------------|---|--|-----------------|------------------------------|
| 1              | Emanuel Singh   | 721607,Jawahar Tower Connector Building, Haldia Dock Complex, Kolkata Port Trust | 8               | 120                          |

### BHEL Spare-17

(Minimum 50% Local Content required for qualifying as Class 1 Local Supplier)

Technical Specifications/तकनीकी विशिष्टियाँ

|                        |                           |
|------------------------|---------------------------|
| Specification Document | <a href="#">View File</a> |
| BOQ Detail Document    | <a href="#">View File</a> |

Advisory-Please refer attached BOQ document for detailed consignee list and delivery period.

Consignees/Reporting Officer/परेषिती/रिपोर्टिंग अधिकारी and/ तथा Quantity/मात्रा

| S.No./क्र. सं. | Consignee Reporting/Officer/ परेषिती/रिपोर्टिंग अधिकारी | Address/पता  | Quantity/मात्रा | Delivery Days/डिलीवरी के दिन |
|----------------|---|--|-----------------|------------------------------|
| 1              | Emanuel Singh   | 721607,Jawahar Tower Connector Building, Haldia Dock Complex, Kolkata Port Trust | 7               | 120                          |

### BHEL Spare-18

(Minimum 50% Local Content required for qualifying as Class 1 Local Supplier)

Technical Specifications/तकनीकी विशिष्टियाँ

|                        |                           |
|------------------------|---------------------------|
| Specification Document | <a href="#">View File</a> |
| BOQ Detail Document    | <a href="#">View File</a> |

Advisory-Please refer attached BOQ document for detailed consignee list and delivery period.



**Consignees/Reporting Officer/परेषिती/रिपोर्टिंग अधिकारी and/ तथा Quantity/मात्र**

| S.No./क्र. सं. | Consignee Reporting/Officer/ परेषिती/रिपोर्टिंग अधिकारी | Address/पता  | Quantity/मात्र | Delivery Days/डिलीवरी के दिन |
|----------------|---|--|----------------|------------------------------|
| 1              | Emanuel Singh   | 721607,Jawahar Tower Connector Building, Haldia Dock Complex, Kolkata Port Trust | 1              | 120                          |

**BHEL Spare-19****(Minimum 50% Local Content required for qualifying as Class 1 Local Supplier)****Technical Specifications/तकनीकी विशिष्टियाँ**

|                               |                           |
|-------------------------------|---------------------------|
| <b>Specification Document</b> | <a href="#">View File</a> |
| <b>BOQ Detail Document</b>    | <a href="#">View File</a> |

Advisory-Please refer attached BOQ document for detailed consignee list and delivery period.

**Consignees/Reporting Officer/परेषिती/रिपोर्टिंग अधिकारी and/ तथा Quantity/मात्र**

| S.No./क्र. सं. | Consignee Reporting/Officer/ परेषिती/रिपोर्टिंग अधिकारी | Address/पता  | Quantity/मात्र | Delivery Days/डिलीवरी के दिन |
|----------------|---|--|----------------|------------------------------|
| 1              | Emanuel Singh   | 721607,Jawahar Tower Connector Building, Haldia Dock Complex, Kolkata Port Trust | 12             | 120                          |

**BHEL Spare-20****(Minimum 50% Local Content required for qualifying as Class 1 Local Supplier)**

**Technical Specifications/तकनीकी विशिष्टियाँ**

|                               |                           |
|-------------------------------|---------------------------|
| <b>Specification Document</b> | <a href="#">View File</a> |
| <b>BOQ Detail Document</b>    | <a href="#">View File</a> |

Advisory-Please refer attached BOQ document for detailed consignee list and delivery period.

**Consignees/Reporting Officer/परेषिती/रिपोर्टिंग अधिकारी and/ तथा Quantity/मात्र**

| <b>S.No./क्र. सं.</b> | <b>Consignee Reporting/Officer/ परेषिती/रिपोर्टिंग अधिकारी</b> | <b>Address/पता</b>   | <b>Quantity/मात्र</b> | <b>Delivery Days/डिलीवरी के दिन</b> |
|-----------------------|--|--|-----------------------|-------------------------------------|
| 1                     | Emanuel Singh  | 721607,Jawahar Tower Connector Building, Haldia Dock Complex, Kolkata Port Trust | 6                     | 120                                 |

**BHEL Spare-21**

**(Minimum 50% Local Content required for qualifying as Class 1 Local Supplier)**

**Technical Specifications/तकनीकी विशिष्टियाँ**

|                               |                           |
|-------------------------------|---------------------------|
| <b>Specification Document</b> | <a href="#">View File</a> |
| <b>BOQ Detail Document</b>    | <a href="#">View File</a> |

Advisory-Please refer attached BOQ document for detailed consignee list and delivery period.

**Consignees/Reporting Officer/परेषिती/रिपोर्टिंग अधिकारी and/ तथा Quantity/मात्र**

| S.No./क्र. सं. | Consignee Reporting/Officer/ परेषिती/रिपोर्टिंग अधिकारी | Address/पता  | Quantity/मात्रा | Delivery Days/डिलीवरी के दिन |
|----------------|---|--|-----------------|------------------------------|
| 1              | Emanuel Singh   | 721607,Jawahar Tower Connector Building, Haldia Dock Complex, Kolkata Port Trust | 1               | 120                          |

### BHEL Spare-22

(Minimum 50% Local Content required for qualifying as Class 1 Local Supplier)

Technical Specifications/तकनीकी विशिष्टियाँ

|                        |                           |
|------------------------|---------------------------|
| Specification Document | <a href="#">View File</a> |
| BOQ Detail Document    | <a href="#">View File</a> |

Advisory-Please refer attached BOQ document for detailed consignee list and delivery period.

Consignees/Reporting Officer/परेषिती/रिपोर्टिंग अधिकारी and/ तथा Quantity/मात्रा

| S.No./क्र. सं. | Consignee Reporting/Officer/ परेषिती/रिपोर्टिंग अधिकारी | Address/पता  | Quantity/मात्रा | Delivery Days/डिलीवरी के दिन |
|----------------|---|--|-----------------|------------------------------|
| 1              | Emanuel Singh   | 721607,Jawahar Tower Connector Building, Haldia Dock Complex, Kolkata Port Trust | 6               | 120                          |

### BHEL Spare-23

(Minimum 50% Local Content required for qualifying as Class 1 Local Supplier)

Technical Specifications/तकनीकी विशिष्टियाँ

|                        |                           |
|------------------------|---------------------------|
| Specification Document | <a href="#">View File</a> |
| BOQ Detail Document    | <a href="#">View File</a> |

Advisory-Please refer attached BOQ document for detailed consignee list and delivery period.

**Consignees/Reporting Officer/परेषिती/रिपोर्टिंग अधिकारी and/ तथा Quantity/मात्र**

| S.No./क्र. सं. | Consignee Reporting/Officer/ परेषिती/रिपोर्टिंग अधिकारी | Address/पता  | Quantity/मात्र | Delivery Days/डिलीवरी के दिन |
|----------------|---|--|----------------|------------------------------|
| 1              | Emanuel Singh   | 721607,Jawahar Tower Connector Building, Haldia Dock Complex, Kolkata Port Trust | 3              | 120                          |

**BHEL Spare-24****(Minimum 50% Local Content required for qualifying as Class 1 Local Supplier)****Technical Specifications/तकनीकी विशिष्टियाँ**

|                               |                           |
|-------------------------------|---------------------------|
| <b>Specification Document</b> | <a href="#">View File</a> |
| <b>BOQ Detail Document</b>    | <a href="#">View File</a> |

Advisory-Please refer attached BOQ document for detailed consignee list and delivery period.

**Consignees/Reporting Officer/परेषिती/रिपोर्टिंग अधिकारी and/ तथा Quantity/मात्र**

| S.No./क्र. सं. | Consignee Reporting/Officer/ परेषिती/रिपोर्टिंग अधिकारी | Address/पता  | Quantity/मात्र | Delivery Days/डिलीवरी के दिन |
|----------------|---|--|----------------|------------------------------|
| 1              | Emanuel Singh   | 721607,Jawahar Tower Connector Building, Haldia Dock Complex, Kolkata Port Trust | 2              | 120                          |

**BHEL Spare-25****(Minimum 50% Local Content required for qualifying as Class 1 Local Supplier)**

**Technical Specifications/तकनीकी विशिष्टियाँ**

|                               |                           |
|-------------------------------|---------------------------|
| <b>Specification Document</b> | <a href="#">View File</a> |
| <b>BOQ Detail Document</b>    | <a href="#">View File</a> |

Advisory-Please refer attached BOQ document for detailed consignee list and delivery period.

**Consignees/Reporting Officer/परेषिती/रिपोर्टिंग अधिकारी and/ तथा Quantity/मात्र**

| <b>S.No./क्र. सं.</b> | <b>Consignee Reporting/Officer/ परेषिती/रिपोर्टिंग अधिकारी</b> | <b>Address/पता</b>   | <b>Quantity/मात्र</b> | <b>Delivery Days/डिलीवरी के दिन</b> |
|-----------------------|--|--|-----------------------|-------------------------------------|
| 1                     | Emanuel Singh  | 721607,Jawahar Tower Connector Building, Haldia Dock Complex, Kolkata Port Trust | 200                   | 120                                 |

**BHEL Spare-26**

**(Minimum 50% Local Content required for qualifying as Class 1 Local Supplier)**

**Technical Specifications/तकनीकी विशिष्टियाँ**

|                               |                           |
|-------------------------------|---------------------------|
| <b>Specification Document</b> | <a href="#">View File</a> |
| <b>BOQ Detail Document</b>    | <a href="#">View File</a> |

Advisory-Please refer attached BOQ document for detailed consignee list and delivery period.

**Consignees/Reporting Officer/परेषिती/रिपोर्टिंग अधिकारी and/ तथा Quantity/मात्र**

| S.No./क्र. सं. | Consignee Reporting/Officer/ परेषिती/रिपोर्टिंग अधिकारी | Address/पता  | Quantity/मात्रा | Delivery Days/डिलीवरी के दिन |
|----------------|---|--|-----------------|------------------------------|
| 1              | Emanuel Singh   | 721607,Jawahar Tower Connector Building, Haldia Dock Complex, Kolkata Port Trust | 1               | 120                          |

### BHEL Spare-27

(Minimum 50% Local Content required for qualifying as Class 1 Local Supplier)

Technical Specifications/तकनीकी विशिष्टियाँ

|                        |                           |
|------------------------|---------------------------|
| Specification Document | <a href="#">View File</a> |
| BOQ Detail Document    | <a href="#">View File</a> |

Advisory-Please refer attached BOQ document for detailed consignee list and delivery period.

Consignees/Reporting Officer/परेषिती/रिपोर्टिंग अधिकारी and/ तथा Quantity/मात्रा

| S.No./क्र. सं. | Consignee Reporting/Officer/ परेषिती/रिपोर्टिंग अधिकारी | Address/पता  | Quantity/मात्रा | Delivery Days/डिलीवरी के दिन |
|----------------|---|--|-----------------|------------------------------|
| 1              | Emanuel Singh   | 721607,Jawahar Tower Connector Building, Haldia Dock Complex, Kolkata Port Trust | 2               | 120                          |

### BHEL Spare-28

(Minimum 50% Local Content required for qualifying as Class 1 Local Supplier)

Technical Specifications/तकनीकी विशिष्टियाँ

|                        |                           |
|------------------------|---------------------------|
| Specification Document | <a href="#">View File</a> |
| BOQ Detail Document    | <a href="#">View File</a> |

Advisory-Please refer attached BOQ document for detailed consignee list and delivery period.

**Consignees/Reporting Officer/परेषिती/रिपोर्टिंग अधिकारी and/ तथा Quantity/मात्र**

| S.No./क्र. सं. | Consignee Reporting/Officer/ परेषिती/रिपोर्टिंग अधिकारी | Address/पता  | Quantity/मात्र | Delivery Days/डिलीवरी के दिन |
|----------------|---|--|----------------|------------------------------|
| 1              | Emanuel Singh   | 721607,Jawahar Tower Connector Building, Haldia Dock Complex, Kolkata Port Trust | 2              | 120                          |

**BHEL Spare-29****(Minimum 50% Local Content required for qualifying as Class 1 Local Supplier)****Technical Specifications/तकनीकी विशिष्टियाँ**

|                               |                           |
|-------------------------------|---------------------------|
| <b>Specification Document</b> | <a href="#">View File</a> |
| <b>BOQ Detail Document</b>    | <a href="#">View File</a> |

Advisory-Please refer attached BOQ document for detailed consignee list and delivery period.

**Consignees/Reporting Officer/परेषिती/रिपोर्टिंग अधिकारी and/ तथा Quantity/मात्र**

| S.No./क्र. सं. | Consignee Reporting/Officer/ परेषिती/रिपोर्टिंग अधिकारी | Address/पता  | Quantity/मात्र | Delivery Days/डिलीवरी के दिन |
|----------------|---|--|----------------|------------------------------|
| 1              | Emanuel Singh   | 721607,Jawahar Tower Connector Building, Haldia Dock Complex, Kolkata Port Trust | 2              | 120                          |

**BHEL Spare-30****(Minimum 50% Local Content required for qualifying as Class 1 Local Supplier)**

**Technical Specifications/तकनीकी विशिष्टियाँ**

|                               |                           |
|-------------------------------|---------------------------|
| <b>Specification Document</b> | <a href="#">View File</a> |
| <b>BOQ Detail Document</b>    | <a href="#">View File</a> |

Advisory-Please refer attached BOQ document for detailed consignee list and delivery period.

**Consignees/Reporting Officer/परेषिती/रिपोर्टिंग अधिकारी and/ तथा Quantity/मात्र**

| <b>S.No./क्र. सं.</b> | <b>Consignee Reporting/Officer/ परेषिती/रिपोर्टिंग अधिकारी</b> | <b>Address/पता</b>   | <b>Quantity/मात्र</b> | <b>Delivery Days/डिलीवरी के दिन</b> |
|-----------------------|--|--|-----------------------|-------------------------------------|
| 1                     | Emanuel Singh  | 721607,Jawahar Tower Connector Building, Haldia Dock Complex, Kolkata Port Trust | 8                     | 120                                 |

**BHEL Spare-31**

**(Minimum 50% Local Content required for qualifying as Class 1 Local Supplier)**

**Technical Specifications/तकनीकी विशिष्टियाँ**

|                               |                           |
|-------------------------------|---------------------------|
| <b>Specification Document</b> | <a href="#">View File</a> |
| <b>BOQ Detail Document</b>    | <a href="#">View File</a> |

Advisory-Please refer attached BOQ document for detailed consignee list and delivery period.

**Consignees/Reporting Officer/परेषिती/रिपोर्टिंग अधिकारी and/ तथा Quantity/मात्र**



| S.No./क्र. सं. | Consignee Reporting/Officer/ परेषिती/रिपोर्टिंग अधिकारी | Address/पता  | Quantity/मात्रा | Delivery Days/डिलीवरी के दिन |
|----------------|---|--|-----------------|------------------------------|
| 1              | Emanuel Singh   | 721607,Jawahar Tower Connector Building, Haldia Dock Complex, Kolkata Port Trust | 8               | 120                          |

### BHEL Spare-32

(Minimum 50% Local Content required for qualifying as Class 1 Local Supplier)

Technical Specifications/तकनीकी विशिष्टियाँ

|                        |                           |
|------------------------|---------------------------|
| Specification Document | <a href="#">View File</a> |
| BOQ Detail Document    | <a href="#">View File</a> |

Advisory-Please refer attached BOQ document for detailed consignee list and delivery period.

Consignees/Reporting Officer/परेषिती/रिपोर्टिंग अधिकारी and/ तथा Quantity/मात्रा

| S.No./क्र. सं. | Consignee Reporting/Officer/ परेषिती/रिपोर्टिंग अधिकारी | Address/पता  | Quantity/मात्रा | Delivery Days/डिलीवरी के दिन |
|----------------|---|--|-----------------|------------------------------|
| 1              | Emanuel Singh   | 721607,Jawahar Tower Connector Building, Haldia Dock Complex, Kolkata Port Trust | 2               | 120                          |

### BHEL Spare-33

(Minimum 50% Local Content required for qualifying as Class 1 Local Supplier)

Technical Specifications/तकनीकी विशिष्टियाँ

|                        |                           |
|------------------------|---------------------------|
| Specification Document | <a href="#">View File</a> |
| BOQ Detail Document    | <a href="#">View File</a> |

Advisory-Please refer attached BOQ document for detailed consignee list and delivery period.

**Consignees/Reporting Officer/परेषिती/रिपोर्टिंग अधिकारी and/ तथा Quantity/मात्र**

| S.No./क्र. सं. | Consignee Reporting/Officer/ परेषिती/रिपोर्टिंग अधिकारी | Address/पता  | Quantity/मात्र | Delivery Days/डिलीवरी के दिन |
|----------------|---|--|----------------|------------------------------|
| 1              | Emanuel Singh   | 721607,Jawahar Tower Connector Building, Haldia Dock Complex, Kolkata Port Trust | 2              | 120                          |

**BHEL Spare-34****(Minimum 50% Local Content required for qualifying as Class 1 Local Supplier)****Technical Specifications/तकनीकी विशिष्टियाँ**

|                               |                           |
|-------------------------------|---------------------------|
| <b>Specification Document</b> | <a href="#">View File</a> |
| <b>BOQ Detail Document</b>    | <a href="#">View File</a> |

Advisory-Please refer attached BOQ document for detailed consignee list and delivery period.

**Consignees/Reporting Officer/परेषिती/रिपोर्टिंग अधिकारी and/ तथा Quantity/मात्र**

| S.No./क्र. सं. | Consignee Reporting/Officer/ परेषिती/रिपोर्टिंग अधिकारी | Address/पता  | Quantity/मात्र | Delivery Days/डिलीवरी के दिन |
|----------------|---|--|----------------|------------------------------|
| 1              | Emanuel Singh   | 721607,Jawahar Tower Connector Building, Haldia Dock Complex, Kolkata Port Trust | 2              | 120                          |

**BHEL Spare-35****(Minimum 50% Local Content required for qualifying as Class 1 Local Supplier)**

**Technical Specifications/तकनीकी विशिष्टियाँ**

|                               |                           |
|-------------------------------|---------------------------|
| <b>Specification Document</b> | <a href="#">View File</a> |
| <b>BOQ Detail Document</b>    | <a href="#">View File</a> |

Advisory-Please refer attached BOQ document for detailed consignee list and delivery period.

**Consignees/Reporting Officer/परेषिती/रिपोर्टिंग अधिकारी and/ तथा Quantity/मात्र**

| <b>S.No./क्र. सं.</b> | <b>Consignee Reporting/Officer/ परेषिती/रिपोर्टिंग अधिकारी</b> | <b>Address/पता</b>   | <b>Quantity/मात्र</b> | <b>Delivery Days/डिलीवरी के दिन</b> |
|-----------------------|--|--|-----------------------|-------------------------------------|
| 1                     | Emanuel Singh  | 721607,Jawahar Tower Connector Building, Haldia Dock Complex, Kolkata Port Trust | 2                     | 120                                 |

**BHEL Spare-36**

**(Minimum 50% Local Content required for qualifying as Class 1 Local Supplier)**

**Technical Specifications/तकनीकी विशिष्टियाँ**

|                               |                           |
|-------------------------------|---------------------------|
| <b>Specification Document</b> | <a href="#">View File</a> |
| <b>BOQ Detail Document</b>    | <a href="#">View File</a> |

Advisory-Please refer attached BOQ document for detailed consignee list and delivery period.

**Consignees/Reporting Officer/परेषिती/रिपोर्टिंग अधिकारी and/ तथा Quantity/मात्र**

| S.No./क्र. सं. | Consignee Reporting/Officer/ परेषिती/रिपोर्टिंग अधिकारी | Address/पता  | Quantity/मात्रा | Delivery Days/डिलीवरी के दिन |
|----------------|---|--|-----------------|------------------------------|
| 1              | Emanuel Singh   | 721607,Jawahar Tower Connector Building, Haldia Dock Complex, Kolkata Port Trust | 2               | 120                          |

### BHEL Spare-37

(Minimum 50% Local Content required for qualifying as Class 1 Local Supplier)

Technical Specifications/तकनीकी विशिष्टियाँ

|                        |                           |
|------------------------|---------------------------|
| Specification Document | <a href="#">View File</a> |
| BOQ Detail Document    | <a href="#">View File</a> |

Advisory-Please refer attached BOQ document for detailed consignee list and delivery period.

Consignees/Reporting Officer/परेषिती/रिपोर्टिंग अधिकारी and/ तथा Quantity/मात्रा

| S.No./क्र. सं. | Consignee Reporting/Officer/ परेषिती/रिपोर्टिंग अधिकारी | Address/पता  | Quantity/मात्रा | Delivery Days/डिलीवरी के दिन |
|----------------|---|--|-----------------|------------------------------|
| 1              | Emanuel Singh   | 721607,Jawahar Tower Connector Building, Haldia Dock Complex, Kolkata Port Trust | 6               | 120                          |

### BHEL Spare-38

(Minimum 50% Local Content required for qualifying as Class 1 Local Supplier)

Technical Specifications/तकनीकी विशिष्टियाँ

|                        |                           |
|------------------------|---------------------------|
| Specification Document | <a href="#">View File</a> |
| BOQ Detail Document    | <a href="#">View File</a> |

Advisory-Please refer attached BOQ document for detailed consignee list and delivery period.

**Consignees/Reporting Officer/परेषिती/रिपोर्टिंग अधिकारी and/ तथा Quantity/मात्र**

| S.No./क्र. सं. | Consignee Reporting/Officer/ परेषिती/रिपोर्टिंग अधिकारी | Address/पता  | Quantity/मात्र | Delivery Days/डिलीवरी के दिन |
|----------------|---|--|----------------|------------------------------|
| 1              | Emanuel Singh   | 721607,Jawahar Tower Connector Building, Haldia Dock Complex, Kolkata Port Trust | 6              | 120                          |

**BHEL Spare-39****(Minimum 50% Local Content required for qualifying as Class 1 Local Supplier)****Technical Specifications/तकनीकी विशिष्टियाँ**

|                               |                           |
|-------------------------------|---------------------------|
| <b>Specification Document</b> | <a href="#">View File</a> |
| <b>BOQ Detail Document</b>    | <a href="#">View File</a> |

Advisory-Please refer attached BOQ document for detailed consignee list and delivery period.

**Consignees/Reporting Officer/परेषिती/रिपोर्टिंग अधिकारी and/ तथा Quantity/मात्र**

| S.No./क्र. सं. | Consignee Reporting/Officer/ परेषिती/रिपोर्टिंग अधिकारी | Address/पता  | Quantity/मात्र | Delivery Days/डिलीवरी के दिन |
|----------------|---|--|----------------|------------------------------|
| 1              | Emanuel Singh   | 721607,Jawahar Tower Connector Building, Haldia Dock Complex, Kolkata Port Trust | 6              | 120                          |

**BHEL Spare-40****(Minimum 50% Local Content required for qualifying as Class 1 Local Supplier)**

**Technical Specifications/तकनीकी विशिष्टियाँ**

|                               |                           |
|-------------------------------|---------------------------|
| <b>Specification Document</b> | <a href="#">View File</a> |
| <b>BOQ Detail Document</b>    | <a href="#">View File</a> |

Advisory-Please refer attached BOQ document for detailed consignee list and delivery period.

**Consignees/Reporting Officer/परेषिती/रिपोर्टिंग अधिकारी and/ तथा Quantity/मात्र**

| <b>S.No./क्र. सं.</b> | <b>Consignee Reporting/Officer/ परेषिती/रिपोर्टिंग अधिकारी</b> | <b>Address/पता</b>   | <b>Quantity/मात्र</b> | <b>Delivery Days/डिलीवरी के दिन</b> |
|-----------------------|--|--|-----------------------|-------------------------------------|
| 1                     | Emanuel Singh  | 721607,Jawahar Tower Connector Building, Haldia Dock Complex, Kolkata Port Trust | 1                     | 120                                 |

**BHEL Spare-41**

**(Minimum 50% Local Content required for qualifying as Class 1 Local Supplier)**

**Technical Specifications/तकनीकी विशिष्टियाँ**

|                               |                           |
|-------------------------------|---------------------------|
| <b>Specification Document</b> | <a href="#">View File</a> |
| <b>BOQ Detail Document</b>    | <a href="#">View File</a> |

Advisory-Please refer attached BOQ document for detailed consignee list and delivery period.

**Consignees/Reporting Officer/परेषिती/रिपोर्टिंग अधिकारी and/ तथा Quantity/मात्र**

| S.No./क्र. सं. | Consignee Reporting/Officer/ परेषिती/रिपोर्टिंग अधिकारी | Address/पता  | Quantity/मात्रा | Delivery Days/डिलीवरी के दिन |
|----------------|---|--|-----------------|------------------------------|
| 1              | Emanuel Singh   | 721607,Jawahar Tower Connector Building, Haldia Dock Complex, Kolkata Port Trust | 2               | 120                          |

### BHEL Spare-42

(Minimum 50% Local Content required for qualifying as Class 1 Local Supplier)

Technical Specifications/तकनीकी विशिष्टियाँ

|                        |                           |
|------------------------|---------------------------|
| Specification Document | <a href="#">View File</a> |
| BOQ Detail Document    | <a href="#">View File</a> |

Advisory-Please refer attached BOQ document for detailed consignee list and delivery period.

Consignees/Reporting Officer/परेषिती/रिपोर्टिंग अधिकारी and/ तथा Quantity/मात्रा

| S.No./क्र. सं. | Consignee Reporting/Officer/ परेषिती/रिपोर्टिंग अधिकारी | Address/पता  | Quantity/मात्रा | Delivery Days/डिलीवरी के दिन |
|----------------|---|--|-----------------|------------------------------|
| 1              | Emanuel Singh   | 721607,Jawahar Tower Connector Building, Haldia Dock Complex, Kolkata Port Trust | 1               | 120                          |

### BHEL Spare-43

(Minimum 50% Local Content required for qualifying as Class 1 Local Supplier)

Technical Specifications/तकनीकी विशिष्टियाँ

|                        |                           |
|------------------------|---------------------------|
| Specification Document | <a href="#">View File</a> |
| BOQ Detail Document    | <a href="#">View File</a> |

Advisory-Please refer attached BOQ document for detailed consignee list and delivery period.

**Consignees/Reporting Officer/परेषिती/रिपोर्टिंग अधिकारी and/ तथा Quantity/मात्र**

| <b>S.No./क्र. सं.</b> | <b>Consignee Reporting/Officer/ परेषिती/रिपोर्टिंग अधिकारी</b> | <b>Address/पता</b>   | <b>Quantity/मात्र</b> | <b>Delivery Days/डिलीवरी के दिन</b> |
|-----------------------|--|--|-----------------------|-------------------------------------|
| 1                     | Emanuel Singh  | 721607,Jawahar Tower Connector Building, Haldia Dock Complex, Kolkata Port Trust | 1                     | 120                                 |

**Buyer Added Bid Specific Terms and Conditions/क्रेता द्वारा जोड़ी गई बिड की विशेष शर्तें**

**1. Generic**

Bidder shall submit the following documents along with their bid for Vendor Code Creation:

- Copy of PAN Card.
- Copy of GSTIN.
- Copy of Cancelled Cheque.
- Copy of EFT Mandate duly certified by Bank.

**2. Generic**

Loading and Unloading at yard will be under the scope of the supplier.

**3. Generic**

While generating invoice in GeM portal, the seller must upload scanned copy of GST invoice and the screenshot of GST portal confirming payment of GST.

**4. Generic**

Bidders are advised to check applicable GST on their own before quoting. Buyer will not take any responsibility in this regards. GST reimbursement will be as per actuals or as per applicable rates (whichever is lower), subject to the maximum of quoted GST %.

**5. Generic**

Supplier shall ensure that the Invoice is raised in the name of Consignee with GSTIN of Consignee only.

**6. Buyer Added Bid Specific ATC**

Buyer Added text based ATC clauses

**Additional Commercial Terms & Conditions**



**(Gem Bid No. GEM/2024/B/5066374 against HDC's Tender No.: HDC/MM/OT-02/22/195)**

**6.1 EMD Deposition:**

Bidders can also submit the EMD with Account Payee Demand Draft in favour of "Syama Prasad Mookerjee Port, Kolkata, Haldia Dock Complex" payable at "Haldia".

Bidder has to upload scanned copy / proof of the DD along with bid and has to ensure delivery of hardcopy to the Buyer within Bid End date / Bid Opening date.

Bidders can also submit the EMD with Payment online through RTGS / internet banking in Beneficiary name

Name of Bank & Branch: State Bank of India, Haldia Port Branch.

Account Name: Syama Prasad Mookerjee Port Haldia

Account No.: 37603321733

IFS Code: SBIN0001360

Bidder to indicate bid number and name of bidding entity in the transaction details field at the time of on-line transfer. Bidder has to upload scanned copy / proof of the Online Payment Transfer along with bid.

**6.2 Pre- Qualification Criteria:**

(i) Bidder should be a Reputed supplier of ' Class-I Local Supplier ' category only as per ' Make in India ' policy of Govt. of India.

(ii) Financial Criteria: Average Annual Financial Turnover during the last three financial years should be at least ₹ 4,30,710.00 only.

(iii) Credential Criteria: The prospective bidder(s) should submit credential for supply of various types of spares for Locomotives / Hardware Materials/Tools tackles/ Mechanical Engineering items for a cumulative amount of ₹ 8,61,420.00 (Rupees eight lakh sixty-one thousand four hundred twenty only) [excluding GST] minimum in any number of orders, during last 7 (seven) years, to Govt., PSU or Public / Private organization which should be substantiated by producing PURCHASE ORDER copy along with any one or more of the following documents :

- a) Receipted Challan,
- b) Certificate of Execution,
- c) GRN,
- d) Excise Invoice,
- e) Tax Invoice,
- f) Consignment Note. etc. as a proof of supply.

Along with the bid, the bidder should submit self-attested / notarized copies of aforesaid supply Order and Performance Certificate of satisfactory completion from the Client in support of contract having been executed as proof of past experience.

**Note: Above stated PRE-QUALIFICATION CRITERIA documents should be submitted along with offer otherwise the offer would be liable for rejection.**

**6.3** Certified copies of audited balance sheet and Profit and Loss account / Trading account for the last 3 (three) financial years should be submitted with UDIN number. If due date (scheduled opening date of tender) falling within three months (April to June) of the closing of the latest financial year, the latest financial year may be ignored and financial turnover of the three years, year previous to the latest financial year may be considered. In case of the bidder is unable to submit audited accounts of last financial year (in case of tender opening date falling after June), due to non - completion of audit or for any other reason, he may be allowed to submit a certificate of turnover issued by the statutory auditor of the company / firm for the previous year.

**6.4** HDC / SMPK reserves the rights to reject all tenders to accept any tender in whole or part without assigning any reason thereof. In case bidders quote the same rate originally, and in case splitting is applicable and if quantity is not divisible equally in such case decision of Engineer of the contract would be binding upon the bidder. General Manager Engineering, Haldia Dock Complex shall be the Engineer-in-charge for this procurement.

**6.5 Price Bids (Part-II) of only those eligible bidders whose Part-I Bids are complete and in order shall only be considered for opening.**

**6.6** Mere participation in tender will not mean that a particular bidder will automatically be considered qualified and their bids will be entertained. Such qualification will be reviewed at the time of evaluation of bids also.

**6.7** Description of materials specifications to be procured have been stated in the many places under the bid document such as Technical Sheet, Price Bid & Un-Price BoQ (Annexure-I) etc. In case of any dispute in the description of materials specifications and in such case, description of material specifications as stated in the Un-Price BoQ (Annexure-I) of the bid document will prevail over the all the description of material specifications stated under this bid document.

**6.8** Tenders without requisite Earnest Money are liable to be rejected excepting relevant exempted categories as per GeM GTC.

**6.9 General Conditions of Contract:**

The Terms and Conditions of Tender shall be read in conjunction with the General Conditions of Contract, Specifications, Bill of Quantities and other documents forming part of this Contract wherever the Contract so requires. The above mentioned General Conditions of Contract may be visited and go through it before quoting for the Tender. General Conditions of Contract is available at SMP, Kolkata [website \(www.kolkataporttrust.gov.in\)](http://www.kolkataporttrust.gov.in), [www.smpportkolkata.shipping.gov.in](http://www.smpportkolkata.shipping.gov.in).

<https://smpportkolkata.shipping.gov.in/showfile.php?layout=1&lang=1&lid=2531>.

Only those Clauses, Forms or Formats, which are not covered elsewhere in this Tender Document, shall be applicable. Also, for the sake of interpretation of the contents of the Appendices, the terms contained in the main tender document (other than Appendices) including the 'General Conditions of Contract, Forms and Agreements' shall prevail.

**6.10** Actual delivery is to be done at the site / Store of Haldia Dock Complex, SMPK, at Haldia or as per discretion of Sr. Dy. Manager (MM). Bidders may visit at site / Store of Haldia Dock Complex, SMPK, at Haldia prior to submission of their bid. Bidder shall get himself thoroughly familiarized with the site conditions, existing road facilities for carrying materials etc. before submission of the tender. He may contact the Sr. Dy. Manager of M.M. Division or his authorized representative at his office at Jawahar Tower, HDC, Haldia in this regard. Non-compliance of the same will in no way relieve the successful bidder of any of his obligations in performing the work in accordance with this Bid Document within the quoted.

**6.11 Evaluation and comparison of bids**

This being an item rate tender, the Bidder shall quote his rates against all items on line based on his own analysis. Only such bids, as determined to be substantially responsive to the requirements of the bid documents will be evaluated. Other non-responsive bids will be rejected. The Port's decision on this shall be final, conclusive and binding. Bidder shall submit their offer for all the items/ or for any one of the item. The evaluation for award of tender will be on the basis of the item wise "L1" basis.

**6.12** To assist in the examination, evaluation and comparison of bids, Haldia Dock Complex, SMPK may ask bidders, individually for clarification of their bid. The request for clarification and the response shall be sent through GeM Portal / or through E-mail of SMPK, but no change in price or substance of the bid shall be sought, offered or permitted.

**6.13 Determination of Responsiveness:**

The bid which does not satisfy the pre-qualification criteria and other bid conditions shall summarily be rejected and shall not be considered for further evaluation. Haldia Dock Complex, SMPK Authority will scrutinize the bids to determine whether the bid is substantially responsive to the requirements of the bid documents. For the purpose of this clause, a substantially responsive bid is one which inter-alia conforms to all the terms and conditions of the bid documents.

#### **6.14 Acceptance of Bid:**

Haldia Dock Complex, SMPK Authority does not bind themselves to accept the lowest bid or any bid and reserves the right to accept any bid in part or to reject any bid or all bids without assigning any reasons whatsoever.

#### **6.15 Security Deposit:**

i) The Earnest Money Deposit shall be released to the unsuccessful Bidder without any interest after finalization of Successful bidder. The Earnest Money of the successful Bidder shall be released after receiving Security Deposit in full.

ii) The EMD may be adjusted towards Security Deposit equal to 5% of the basic contract value. The successful bidder shall pay Balance Security Deposit by Banker's Cheque or by Demand Draft of any Scheduled/Nationalized Bank of India drawn in favour of "Syama Prasad Mookerjee Port, Kolkata, Haldia Dock Complex" and payable at "Haldia", within 30 days from the date of placement of order. Failing which, the HDC reserves the right to cancel the acceptance and forfeit the Earnest Money.

The Security Deposit shall be refunded without interest after the successful execution of the order and completion of guarantee period satisfactorily.

iii) If the contract value of Rupees One lac and above, the supplier shall be offered a DD or Bank Guarantee in the form of Security Deposit by any nationalized/scheduled bank payable at Haldia. The Bank Guarantee shall be submitted in the format available with HDC. In this regard this may please be noted that We have introduced a Bank Guarantee Repository System (BGRS) through ICICI Bank for handling the BGs both for KDS and HDC and therefore **"while issuing Bank Guarantee issuing applicant must mention receiver's details as ICICI Bank IFSC ICIC0003507 Branch- Haldia Township Branch, in BG text at which SFMS IFIN 760 messages to be sent by issuing Bank, to establish the authenticity of given BG"**.

iv) In the event of the successful bidder failing to execute the order within the stipulated delivery period without sufficient reasons acceptable to the Trustees, the Security Deposit may be forfeited and the order be cancelled at the option of the Trustees'.

#### **6.16 Governing Law:**

The contract shall be governed by all relevant Indian Acts applicable only within the jurisdiction of the High Court at Kolkata. Disputes if any shall be under the jurisdiction of courts in Kolkata.

#### **6.17 Scope of Work:**

The work comprises of supply and delivery of "Spares for BHEL make (BHEL-1,2&3) Locomotives" as specified in the Bill of Quantities at the site/store of HDC at Haldia, or at any other point within the jurisdiction of SMPK, HDC as per directives of the Sr. Dy. Manager (MM), Haldia including unloading and stacking.

#### **6.18 Price:**

The bidder shall quote his price as per the Bill of Quantities in the Price bid (Part-II). Price(s) shall be quoted on F.O.R. basis up to Dock Site/Store of Haldia Dock Complex, SMPK, at Haldia, including charges for manufacturing, inspection, packing, forwarding, loading, transportation, unloading, stacking and transit risk necessary for the complete services as described in the documents i.e., on free delivery basis up to Dock Site/Store of Haldia Dock Complex, SMPK, at Haldia. The applicable percentage of GST should be included in their rate.

#### **6.19 GST:**

Please indicate GST rate in % which is included in the quoted Price.

#### **6.20 Terms of delivery:**

F.O.R at Stores/Site of Haldia Dock Complex, SMPK, at Haldia.

#### **6.21 Delivery period:**

Delivery of materials must be completed within 120 days from the date of issuance of Order. Materials shall be delivered including unloading by successful bidder at their own cost, risk and responsibility at the Site

/ Store of Haldia Dock Complex, Haldia.

**6.22 Payment Terms:**

Payment will be made on the basis of actual supply and delivery of materials in good condition and acceptance of the same at designated points and on submission of Bill accompanied with Inspection Certificate and challan duly signed at Sites / Store Officer of Haldia Dock Complex or his authorized representative. The bills should be submitted in quadruplicate to Sr. Dy. Manager (MM)'s Office with necessary documents e.g., receipted challan in duplicate, test certificate, guarantee certificate, inspection report. Part payment may be allowed.

Payment shall be credited to your bank account through NEFT/RTGS mechanism within 30(thirty) days of receipt of satisfactory acceptance of materials at Haldia Dock Complex, Haldia Store/site. by successful bidder would submit their bank Account No with the name and address of the bank along with the branch name account no. and IFS code number in the bill.

**6.23 Income Tax Deduction:**

Deduction of Income Tax shall be made from any amount payable to the Contractor as per the relevant provisions of the Income Tax Act.

**6.24 TDS under GST Law:**

Tax shall be deducted under GST law as per prevailing rate.

**6.25 Inspection at Destination:**

i) All supplies are subject to inspection before acceptance by Sr. Dy. Manager(P&E) or his authorized representative at Haldia after delivery of material. In case the materials supplied is not in good condition/suitable, supplier shall have to replace it at his own cost immediately.

ii) Final acceptance and certification of work will be done by Sr. Dy. Manager(P&E) or his authorized officer.

iii) Any material/part/component, if found defective or not up to the standard quality, shall be forthwith rejected and the same shall be replaced by the supplier free of cost.

**6.26 Guarantee:**

The spare parts will be guaranteed by you against any manufacturing defect and poor performance / workmanship for a period of 12 months from the date of supply and acceptance. If any defect develops during the Guarantee Period, the defective materials will have to be replaced / rectified, as the case may be, by you at your own cost.

HDC will also be entitled to recover any loss incurred directly or indirectly due to non fulfillment of guarantee.

**6.27 Transit Risk:**

Transit risk will be on supplier's account since the delivery is to be made on F.O.R. Destination basis.

**6.28 Liquidated Damages:**

If the successful bidder (supplier) failed to supply materials during the delivery period, LD will be levied @ ½% per week on the basic value of the delayed portion subject to maximum of 10% of total basic value of order and GST would be chargeable extra on LD as applicable.

**6.29 Force Majeure:**

In the event of either party being rendered unable by Force Majeure to perform any obligation required to be performed by them under the Contract, the relative obligation of the party affected by such Force Majeure shall, upon notification to the other party, be suspended for the period during which Force Majeure event lasts. The cost and loss sustained by either party shall be borne by the respective parties. The term "FORCE MAJEURE" as employed herein shall mean acts of God, Earth- quake, War, Revolts, Riots, Fire, Floods, Sabotage, Hurricanes/Cyclones and Strikes, excluding strikes by the employees of the Supplier or, their sub- Contractors. Upon occurrence of such cause and upon its termination, the party alleging that it has been rendered unable as aforesaid, shall notify the other party in writing immediately but not later 7 (seven)

days after the alleged beginning thereof, giving full particulars and satisfactory evidence in support of its claim.

**6.30 Risk Purchase:**

In case of supplier's failure and at the absolute discretion of the Sr. Dy. Manager (MM), the work may be ordered to be completed by some other agency at the risk and expense of the supplier (successful tenderer) after a minimum three days' notice in writing has been given to the supplier by the Sr. Dy. Manager (M.M.) or, his representative. In case of risk purchase extra cost will be borne by the supplier (successful tenderer).

**6.31 Dock Permits:**

The successful Bidder shall have to obtain permits from the office of the Sr. Dy. Manager(MM)/ Sr. Dy. Manager(P&E) or his authorised representative for delivery of materials and Dock Permit or as directed for entry of their vehicles and workers into the Trustees' Stores for unloading and stacking of the material. Such permits shall be issued to the Bidder against receipt of proper application with **payment of necessary charges (if any)** for the same during normal working hours on any working day.

**6.32 Packing of Materials:**

Material will be packed by successful bidder at their own responsibility at their own cost and arrangement for protection against any damage, loss, breakage or leakage etc.

**6.33 Dispatch Arrangements:**

The supplier shall be fully responsible for any transit loss or damage to the materials. The supplier shall send advance intimation as to the actual date of delivery of each and every instalment of supply. Delivery of materials will not be accepted on Saturday, Sundays and Port Holidays. The authorized representative of the suppliers should be present at the time delivery for jointly noting with the representative of SMPK the discrepancies, if any, regarding the particulars of materials actually delivered against the challans for the same. Delivery will not be accepted if not accompanied with proper delivery challans (in quadruplicate) and other related documents like inspection certificates, etc. No lorry shall be permitted into the protected area during night-time. Detention of lorries, if any, will be on supplier's account. In case e-way bill is required to deliver the materials, suppliers need to arrange themselves for the same through latest online portal.

**6.34 Purchase Order Issuance:**

The successful bidder will be required to take necessary action from the date of issuance of purchase order. Purchase order may be issued either through GeM portal or through e-mail or by hand or by any other mode suitably and it will be considered as acceptance of order by successful bidder for execution of the order and it shall be a binding of contract between Haldia Dock Complex, SMPK Authority and the successful bidder.

**6.35 Workmen Compensation:**

The successful bidder(s) must cover his employees / workers, who will be engaged for delivery, unloading & stacking job at SMPK site, under workmen compensation act, fatal accident act and personal injuries insurance act for protection against any injury / accident and shall have to bear all the consequences and cost as applicable as per relevant acts.

**6.36 Personal Protective Equipment (PPE):**

Suppliers and their workmen including driver & helper must use PPE i.e. Safety Helmet etc. at the time of supply of materials inside the dock premises.

**6.37 Certificates:**

Bidder shall submit Test Certificates along with supply. Test Certificates should be either from manufacturer or from any Government/Government approved or registered test house, Guarantee certificate must be produced at the time of inspection of the materials and along with the supply.

**6.38 Authority in signing the documents for submission of Tender / Offer:**

All documents to be uploaded by the bidder should be signed under official seal by -

a) In case the Tender is submitted by a Proprietorship Firm, the same should be signed either by Proprietor or other person, holding a valid Power of Attorney from the Proprietor, in connection with this Tender. The signature of such Power of Attorney holder should be attested by the Proprietor.

b) In case the Tender is submitted by a Partnership Firm, the same should be signed either by partner, holding valid Power of Attorney from the partners, in connection with this Tender. The signature of such Power of Attorney holder should be attested by the partners.

c) In case the Tender is submitted by a Limited Company, the same should be signed by person holding valid Power of Attorney executed in his favour (in connection with this Tender) and the signature of such Power of Attorney holder should also be attested, in accordance with the constitution of the Limited Company.

**6.39 Bidder should upload duly filled, signed and sealed enclosures attached as Annexure S-I/II/III/IV/V/VI/VII & VIII and signed Bid Document along with signed Additional Terms and condition with the bid as a token of acceptance of specifications and conditions of the bid.**

#### 7. Buyer Added Bid Specific ATC

Buyer uploaded ATC document [Click here to view the file.](#)

### **Disclaimer/अस्वीकरण**

The additional terms and conditions have been incorporated by the Buyer after approval of the Competent Authority in Buyer Organization, whereby Buyer organization is solely responsible for the impact of these clauses on the bidding process, its outcome, and consequences thereof including any eccentricity / restriction arising in the bidding process due to these ATCs and due to modification of technical specifications and / or terms and conditions governing the bid. If any clause(s) is / are incorporated by the Buyer regarding following, the bid and resultant contracts shall be treated as null and void and such bids may be cancelled by GeM at any stage of bidding process without any notice:-

1. Definition of Class I and Class II suppliers in the bid not in line with the extant Order / Office Memorandum issued by DPIIT in this regard.
2. Seeking EMD submission from bidder(s), including via Additional Terms & Conditions, in contravention to exemption provided to such sellers under GeM GTC.
3. Publishing Custom / BOQ bids for items for which regular GeM categories are available without any Category item bunched with it.
4. Creating BoQ bid for single item.
5. Mentioning specific Brand or Make or Model or Manufacturer or Dealer name.
6. Mandating submission of documents in physical form as a pre-requisite to qualify bidders.
7. Floating / creation of work contracts as Custom Bids in Services.
8. Seeking sample with bid or approval of samples during bid evaluation process. (However, in bids for [attached categories](#), trials are allowed as per approved procurement policy of the buyer nodal Ministries)
9. Mandating foreign / international certifications even in case of existence of Indian Standards without specifying equivalent Indian Certification / standards.
10. Seeking experience from specific organization / department / institute only or from foreign / export experience.
11. Creating bid for items from irrelevant categories.
12. Incorporating any clause against the MSME policy and Preference to Make in India Policy.
13. Reference of conditions published on any external site or reference to external documents/clauses.
14. Asking for any Tender fee / Bid Participation fee / Auction fee in case of Bids / Forward Auction, as the case may be.

Further, if any seller has any objection/grievance against these additional clauses or otherwise on any aspect of this bid, they can raise their representation against the same by using the Representation window provided in the bid details field in Seller dashboard after logging in as a seller within 4 days of bid publication on GeM. Buyer is duty bound to reply to all such representations and would not be allowed to open bids if he fails to reply to such representations.

[This Bid is also governed by the General Terms and Conditions/ यह बिड सामान्य शर्तों के अंतर्गत भी शासित है](#)

In terms of GeM GTC clause 26 regarding Restrictions on procurement from a bidder of a country which shares a land border with India, any bidder from a country which shares a land border with India will be eligible to bid in this tender only if the bidder is registered with the Competent Authority. While participating in bid, Bidder has to undertake compliance of this and any false declaration and non-compliance of this would be a ground for immediate termination of the contract and further legal action in accordance with the laws./जेम की सामान्य शर्तों के खंड 26 के संदर्भ में भारत के साथ भूमि सीमा साझा करने वाले देश के बिडर से खरीद पर प्रतिबंध के संबंध में भारत के साथ भूमि सीमा साझा करने वाले देश का कोई भी बिडर इस निविदा में बिड देने के लिए तभी पात्र होगा जब वह बिड देने वाला सक्षम प्राधिकारी के पास पंजीकृत हो। बिड में भाग लेते समय बिडर को इसका अनुपालन करना होगा और कोई भी गलत घोषणा किए जाने व इसका अनुपालन न करने पर अनुबंध को तत्काल समाप्त करने और कानून के अनुसार आगे की कानूनी कार्रवाई का आधार होगा।

**---Thank You/धन्यवाद---**

## BILL OF QUANTITIES (UN-PRICED BID)

Gem Bid No. GEM/2024/B/5066374 against HDC's Tender No.: HDC/MM/OT-02/22/195

Name of Work: Supply and delivery of Spares for BHEL make (BHEL-1,2&amp;3) Locomotives for P&amp;E Division of Haldia Dock Complex.

| Sl. No. | Description Of Item  | Quantity (in Nos.) | If your offer exactly match to our specification, write 'YES', & specify make / brand, if any. (No other specification will be accepted) |
|---------|--|--------------------|--|
| 1.      | INLET VALVE SEAT (for KPC make 6CD 4UC Expressor)                      | 12                 |  |
| 2.      | INLET VALVE ASSLY.(for KPC make 6CD 4UC Expressor)                     | 3                  |  |
| 3.      | SAFETY VALVE ASSY (for KPC make 6CD 4UC Expressor)                     | 3                  |  |
| 4.      | OIL STRAINER ASSY (Double Screen) (for KPC make 6CD 4UC Expressor)     | 3                  |  |
| 5.      | OIL STRAINER ASSY (Single Screen)(for KPC make 6CD 4UC Expressor)      | 2                  |  |
| 6.      | INNER VALVE SPRING (for KPC make 6CD 4UC Expressor)                    | 6                  |  |
| 7.      | PLUG DISCHARGE VALVE (for KPC make 6CD 4UC Expressor)                  | 6                  |  |
| 8.      | L P COMP RING STD (for KPC make 6CD 4UC Expressor)                     | 6                  |  |
| 9.      | HP PISTON RING STD (for KPC make 6CD 4UC Expressor)                    | 6                  |  |
| 10.     | LP OIL RING STD (for KPC make 6CD 4UC Expressor)                       | 6                  |  |
| 11.     | HP OIL RING STD (for KPC make 6CD 4UC Expressor)                       | 6                  |  |
| 12.     | GASKET (CRANKCASE TO HP/LP/EXT. CYL.) (for KPC make 6CD 4UC Expressor) | 6                  |  |
| 13.     | GASKET HP CYLINDER HEAD (for KPC make 6CD 4UC Expressor)               | 6                  |  |
| 14.     | CYLINDER HEAD GASKET (for KPC make 6CD 4UC Expressor)                  | 3                  |  |
| 15.     | INLET VALVE PLUG (for KPC make 6CD 4UC Expressor)                      | 6                  |  |
| 16.     | VALVE SHEET NUT (for KPC make 6CD 4UC Expressor)                       | 8                  |  |
| 17.     | DISCHARGE VALVE SEAT (for KPC make 6CD 4UC Expressor)                  | 7                  |  |
| 18.     | HP CYLINDER -8150, model no-6CD 4U-expressor                           | 1                  |  |
| 19.     | GASKET FOR DISCHARGE FLANGE (for KPC make 6CD 4UC Expressor)           | 12                 |  |
| 20.     | UNLOADER SPRING (for KPC make 6CD 4UC Expressor)                       | 6                  |  |
| 21.     | HP CYLINDER HEAD ASSEMBLY (for KPC make 6CD 4UC Expressor)             | 1                  |  |
| 22.     | UNLOADER ASSLY WITH PLUNGER (for KPC make 6CD 4UC Expressor)           | 6                  |  |

Continue to next page.....



**BILL OF QUANTITIES (UN-PRICED BID)**[Gem Bid No. GEM/2024/B/5066374 against HDC's Tender No.: HDC/MM/OT-02/22/195](#)**Name of Work: Supply and delivery of Spares for BHEL make (BHEL-1,2&3) Locomotives for P&E Division of Haldia Dock Complex.**

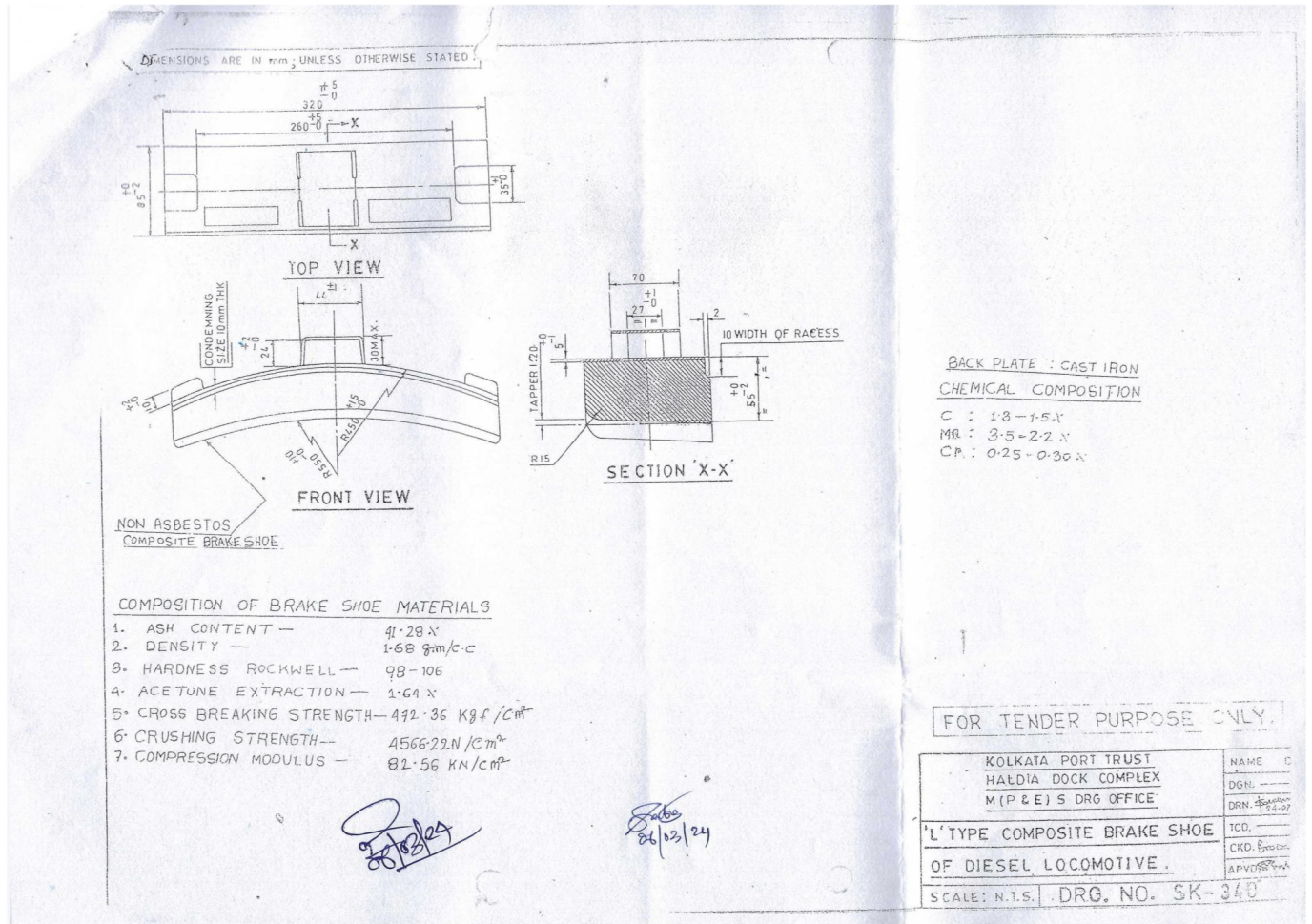
| Sl. No. | Description Of Item  | Quantity (in Nos.) | If your offer exactly match to our specification, write 'YES', & specify make / brand, if any. (No other specification will be accepted) |
|---------|--|--------------------|--|
| 23.     | Solenoid Valve 64V   | 3                  |  |
| 24.     | N1 reducing Valve Complete Assly.  | 2                  |  |
| 25.     | L type composite Brake shoes (HDC drg. No. SK340)  | 200                |  |
| 26.     | Engine Control Switch-254 type KS-40   | 1                  |  |
| 27.     | Magnetic valve, 64V  | 2                  |  |
| 28.     | MCB-150amp   | 2                  |  |
| 29.     | MCB-100amp   | 2                  |  |
| 30.     | MCB-30amp.   | 8                  |  |
| 31.     | MCB-15amp  | 8                  |  |
| 32.     | Pressure switch (range:4-17kg/cm <sup>2</sup> , differential:1.2-4kg/cm <sup>2</sup> ) type-5PB      | 2                  |  |
| 33.     | Oil Pressure switch (range:0-3.4 bar, type-PF-3P4-W, differential:1.2-4kg/cm <sup>2</sup> ) type-5PB | 2                  |  |
| 34.     | MU switch, 250V, 15A   | 2                  |  |
| 35.     | Carden Shaft (As per HDC Drawing SK 361)   | 2                  |  |
| 36.     | 1 1/4" Check Valve   | 2                  |  |
| 37.     | Start Push Switch (Green)  | 6                  |  |
| 38.     | Stop Push Switch (Red)   | 6                  |  |
| 39.     | Mashroom Head Push Switch (Black)  | 6                  |  |
| 40.     | Voltage Regulator Panel of Type 8VG-52 EQVT to GE CAT No.17FH-20BZ (Sirveen Control System)          | 1                  |  |
| 41.     | Shunt for M-24 Power Contact   | 2                  |  |
| 42.     | Generator Field (G.F) Contactor  | 1                  |  |
| 43.     | E.B.R Panel, Type No- 25890030047, EFR 5 (BHEL)  | 1                  |  |

**Signature of Tenderer with Office Seal**

Name of Work: Supply and delivery of Spares for BHEL make (BHEL-1,2&3) Locomotives for P&E Division of Haldia Dock Complex.

**[Gem Bid No. GEM/2024/B/5066374 against HDC's Tender No.: HDC/MM/OT-02/22/195]**

**Drawing No. : SK-340**

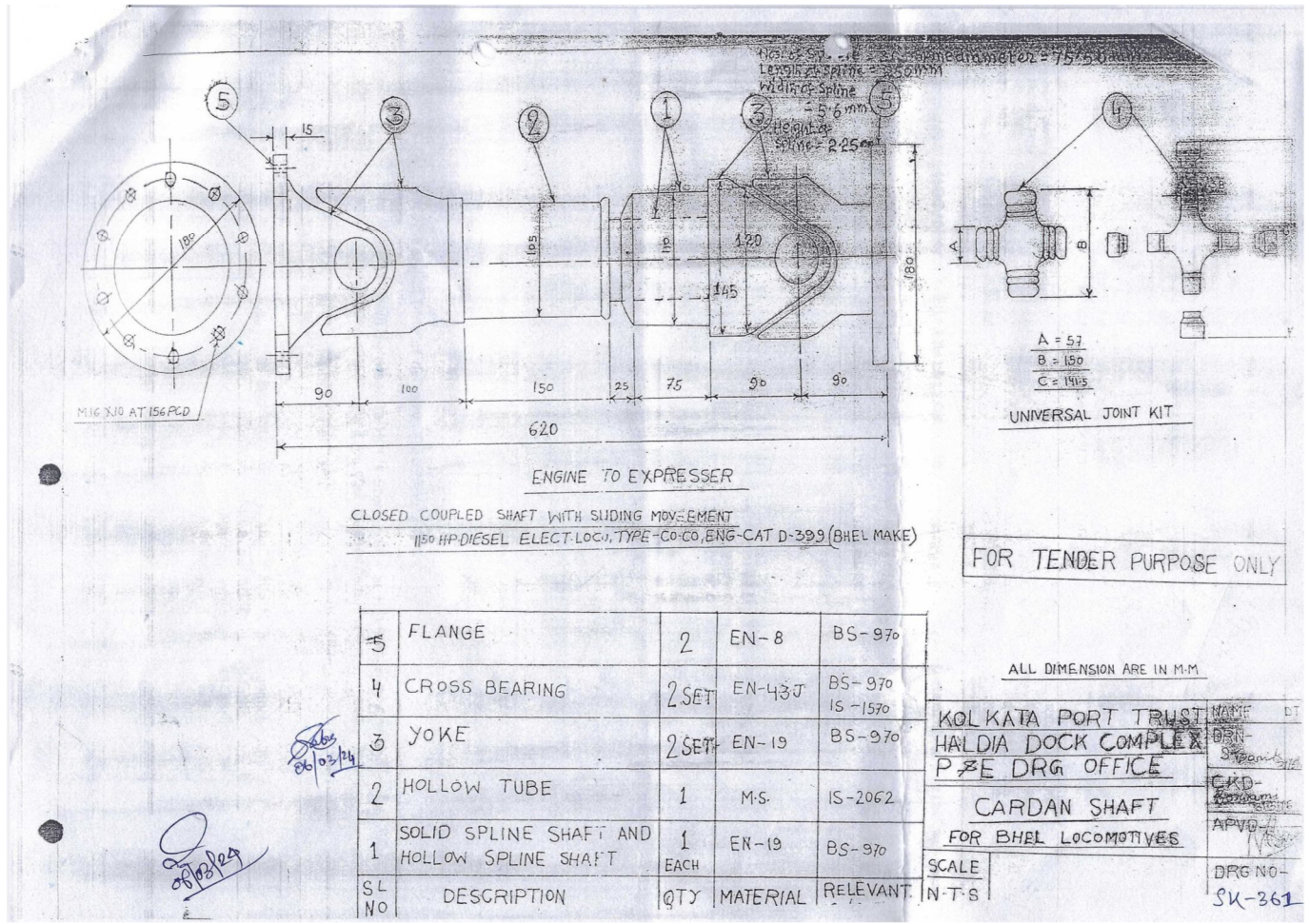


Signature of Tenderer with Office Seal

Name of Work: Supply and delivery of Spares for BHEL make (BHEL-1,2&3) Locomotives for P&E Division of Haldia Dock Complex.

[Gem Bid No. GEM/2024/B/5066374 against HDC's Tender No.: HDC/MM/OT-02/22/195]

Drawing No. : SK-361



Signature of Tenderer with Office Seal

**DECLARATION OF THE BIDDER**

**FORMAT FOR SUBMITTING DECLARATION REGARDING BANNING / DELISTING, BIDDING DOCUMENTS DOWNLOADED FROM WEBSITE, PRICE SCHEDULE, ETC.**

[To be printed on the bidder's Letter Head duly filled and uploaded after seal & signing]

To,  
Sr. Dy. Manager (MM) Haldia Dock Complex;  
Syama Prasad Mookerjee Port, Kolkata.

Name of Work: Supply and delivery of Spares for BHEL make (BHEL-1,2&3) Locomotives P&E Division of Haldia Dock Complex.

[Gem Bid No. GEM/2024/B/5066374 against HDC's Tender No.: HDC/MM/OT-02/22/195](#)

I.....,the authorized signatory of the.....(Name of the Company /Firm) do hereby declare / confirm that:

\*I/We have not been debarred or de-listed by any Government or Quasi-Government Agencies or Public Sector Undertaking in India.

I / We have examined carefully, read and understood the above Terms and Conditions, Specifications and General Conditions of Contract. I / We hereby tender and undertake to execute and complete all the works required to be performed in accordance with the Specifications, Bill of Quantities, General Conditions of the Contract and the Terms and Conditions as stated in the Tender and at rates and prices set out in the annexed Bill of Quantities within the time period as stated in the Tender. In the event of our Tender being accepted in full or, in part, I / we also hereby agree that the said Tender, Specifications, Bill of Quantities, General Conditions of Contract and the Terms and Conditions as stated in the Tender together with the acceptance thereof in writing by or, on behalf of the Trustees' shall form the Contract. I/we have not made any addition/modification/alteration in the Bidding Documents hosted in the websites. I / we also hereby declare that the credentials, financial etc document submitted by us and particular of facts stated in this bid are genuine and true.

Signature of authorized person of the bidder

(With office seal)

\* In case the firm has been debarred or de-listed by any Government or Quasi-Government Agencies or Public Sector Undertaking in India, then the same should be declared properly, after modifying the sentence, suitably.

**GENERAL INFORMATION OF THE BIDDER**[Gem Bid No. GEM/2024/B/5066374 against HDC's Tender No.: HDC/MM/OT-02/22/195](#)

**Name of Work: Supply and delivery of Spares for BHEL make (BHEL-1,2&3) Locomotives for Lock Section, P&E Division of Haldia Dock Complex.**

(To be printed on the bidder's Letter Head dully filled scanned and uploaded after seal and signature)

The bidder must submit the information in this format.

|       |   |   |  |
|-------|---|---|--|
| 1.    | Information regarding bidder's authorized representative(s) / contact person(s)   |   |  |
|       | a )   | Name(s)                                     |  |
|       | b )   | Address(es)                                 |  |
|       | c )   | Telephone number(s)                         |  |
|       | d )   | Facsimile number(s)                         |  |
|       | e )   | Electronic mail address                     |  |
| 2.    | a)  | Address of the branch office, if any        |  |
|       | b)  | Name of the contact person at branch office |  |
|       | c)  | Telephone number(s)                         |  |
|       | d)  | Facsimile number(s)                         |  |
|       | e)  | Electronic mail address                     |  |
| 3.    | Whether the bidder is a Proprietorship Firm or Partnership Firm or Limited/ Pvt. Limited Company  |   |  |
| 4(i)  | Whether the bidder is a 'Class-I local supplier' / or 'Class-II local supplier' / or 'Non-Local supplier' as per Make in India Policy.<br>(Please indicate which is applicable) |   |  |
| 4(ii) | Whether the bidder is a manufacturer / or their authorized dealer/distributor or a reputed supplier as per their trade Policy.<br>(Please indicate which is applicable)         |   |  |
| 5.    | Details of the Banker(s):   |   |  |
|       | a )   | Name of the Banker(s) in full.              |  |
|       | b )   | Address(es) of the Banker(s)                |  |
|       | c )   | Telephone number(s)                         |  |
|       | d )   | Facsimile number(s)                         |  |
|       | e )   | Electronic mail address                     |  |
|       | f )   | Name(s) of the contact person(s)            |  |

**Signature of Tenderer with Office Seal**

**Annexure-V**

|     |   |  |
|-----|---|--|
| 5.  | Bank details for ECS payment :                              |  |
| a   | Bank Account number.  |  |
| b   | Name of the bank.   |  |
| c   | Name of the branch.   |  |
| d   | Address of the branch.                                      |  |
| e   | IFSC code   |  |
| 6.  | Income Tax details (if applicable) :                        |  |
| a ) | Permanent Account Number (PAN)                              |  |
| b ) | GST Registration Number                                     |  |
| 7.  | Employees' Provident Fund (EPF) Code No.,<br>if applicable  |  |
| 8.  | Employees' State Insurance (ESI) Code No.,<br>if applicable |  |

**Signature of Tenderer with Office Seal**

## GST Details

Gem Bid No. GEM/2024/B/5066374 against HDC's Tender No.: HDC/MM/OT-02/22/195

Name of Work: Supply and delivery of Spares for BHEL make (BHEL-1,2&3) Locomotives for P&E Division of Haldia Dock Complex.

| Sl. No. | Description Of Item  | HSN Code | GST Rate (In %) |           |           |
|---------|--|----------|-----------------|-----------|-----------|
|         |  |          | CGST Rate       | SGST Rate | IGST Rate |
| 1.      | INLET VALVE SEAT (for KPC make 6CD 4UC Expressor)                      |          |                 |           |           |
| 2.      | INLET VALVE ASSLY.(for KPC make 6CD 4UC Expressor)                     |          |                 |           |           |
| 3.      | SAFETY VALVE ASSY (for KPC make 6CD 4UC Expressor)                     |          |                 |           |           |
| 4.      | OIL STRAINER ASSY (Double Screen) (for KPC make 6CD 4UC Expressor)     |          |                 |           |           |
| 5.      | OIL STRAINER ASSY (Single Screen)(for KPC make 6CD 4UC Expressor)      |          |                 |           |           |
| 6.      | INNER VALVE SPRING (for KPC make 6CD 4UC Expressor)                    |          |                 |           |           |
| 7.      | PLUG DISCHARGE VALVE (for KPC make 6CD 4UC Expressor)                  |          |                 |           |           |
| 8.      | L P COMP RING STD (for KPC make 6CD 4UC Expressor)                     |          |                 |           |           |
| 9.      | HP PISTON RING STD (for KPC make 6CD 4UC Expressor)                    |          |                 |           |           |
| 10.     | LP OIL RING STD (for KPC make 6CD 4UC Expressor)                       |          |                 |           |           |
| 11.     | HP OIL RING STD (for KPC make 6CD 4UC Expressor)                       |          |                 |           |           |
| 12.     | GASKET (CRANKCASE TO HP/LP/EXT. CYL.) (for KPC make 6CD 4UC Expressor) |          |                 |           |           |
| 13.     | GASKET HP CYLINDER HEAD (for KPC make 6CD 4UC Expressor)               |          |                 |           |           |
| 14.     | CYLINDER HEAD GASKET (for KPC make 6CD 4UC Expressor)                  |          |                 |           |           |
| 15.     | INLET VALVE PLUG (for KPC make 6CD 4UC Expressor)                      |          |                 |           |           |
| 16.     | VALVE SHEET NUT (for KPC make 6CD 4UC Expressor)                       |          |                 |           |           |
| 17.     | DISCHARGE VALVE SEAT (for KPC make 6CD 4UC Expressor)                  |          |                 |           |           |
| 18.     | HP CYLINDER -8150, model no-6CD 4U-expressor                           |          |                 |           |           |
| 19.     | GASKET FOR DISCHARGE FLANGE (for KPC make 6CD 4UC Expressor)           |          |                 |           |           |
| 20.     | UNLOADER SPRING (for KPC make 6CD 4UC Expressor)                       |          |                 |           |           |
| 21.     | HP CYLINDER HEAD ASSEMBLY (for KPC make 6CD 4UC Expressor)             |          |                 |           |           |
| 22.     | UNLOADER ASSLY WITH PLUNGER (for KPC make 6CD 4UC Expressor)           |          |                 |           |           |

Continue to next page.....

## GST Details

Gem Bid No. GEM/2024/B/5066374 against HDC's Tender No.: HDC/MM/OT-02/22/195

Name of Work: Supply and delivery of Spares for BHEL make (BHEL-1,2&3) Locomotives for P&E Division of Haldia Dock Complex.

| Sl. No. | Description Of Item   | HSN Code | GST Rate (In %) |           |           |
|---------|---|----------|-----------------|-----------|-----------|
|         |   |          | CGST Rate       | SGST Rate | IGST Rate |
| 23.     | Solenoid Valve 64V  |          |                 |           |           |
| 24.     | N1 reducing Valve Complete Assly.   |          |                 |           |           |
| 25.     | L type composite Brake shoes (HDC drg. No. SK340)   |          |                 |           |           |
| 26.     | Engine Control Switch-254 type KS-40  |          |                 |           |           |
| 27.     | Magnetic valve, 64V   |          |                 |           |           |
| 28.     | MCB-150amp  |          |                 |           |           |
| 29.     | MCB-100amp  |          |                 |           |           |
| 30.     | MCB-30amp.  |          |                 |           |           |
| 31.     | MCB-15amp   |          |                 |           |           |
| 32.     | Pressure switch (range:4-17kg/cm2, differential:1.2-4kg/cm2) type-5PB                       |          |                 |           |           |
| 33.     | Oil Pressure switch (range:0-3.4 bar, type-PF-3P4-W, differential:1.2-4kg/cm2) type-5PB     |          |                 |           |           |
| 34.     | MU switch, 250V, 15A  |          |                 |           |           |
| 35.     | Carden Shaft (As per HDC Drawing SK 361)  |          |                 |           |           |
| 36.     | 1 1/4" Check Valve  |          |                 |           |           |
| 37.     | Start Push Switch (Green)   |          |                 |           |           |
| 38.     | Stop Push Switch (Red)  |          |                 |           |           |
| 39.     | Mashroom Head Push Switch (Black)   |          |                 |           |           |
| 40.     | Voltage Regulator Panel of Type 8VG-52 EQVT to GE CAT No.17FH-20BZ (Sirveen Control System) |          |                 |           |           |
| 41.     | Shunt for M-24 Power Contact  |          |                 |           |           |
| 42.     | Generator Field (G.F) Contactor   |          |                 |           |           |
| 43.     | E.B.R Panel, Type No- 25890030047, EFR 5 (BHEL)   |          |                 |           |           |

Signature of Tenderer with Office Seal



**Check List of Documents to be submitted**

| <b>Sl. No.</b> | <b>List of Documents to be submitted</b>   | <b>"Yes/No"</b> | <b>Page No.</b> |
|----------------|--|-----------------|-----------------|
| 1              | Copy of GST Registration Certificate   |                 |                 |
| 2              | Copy of PAN Card   |                 |                 |
| 3              | Copy of last three financial years Balance Sheet and Profit & Loss A/c. (audited where applicable) as per NIT  |                 |                 |
| 4              | Deposit of EMD as per tender condition   |                 |                 |
| 5              | Copy of supply order plus delivery proof as per NIT  |                 |                 |
| 6              | Duly filed signed stamped copy of 'each page of Additional Terms and condition' along with 'GeM bid document'  |                 |                 |
| 7              | Duly filed signed, stamped copy of 'Annexure-I, Annexure-II, Annexure-III, Annexure-IV, Annexure-V, Annexure-VI, & Annexure-VII' which are the part of ATC and attached here with in the GeM bid document. |                 |                 |
| 8              | Copy of Valid Trade License (If applicable)  |                 |                 |
| 9              | Copy of self-certification that the item offered meets the local content requirement for 'Class-I local supplier'/ 'Class-II local supplier', as per bid document.   |                 |                 |
| 10             | Any other documents (if applicable)  |                 |                 |

**Signature of Tenderer with Office Seal**